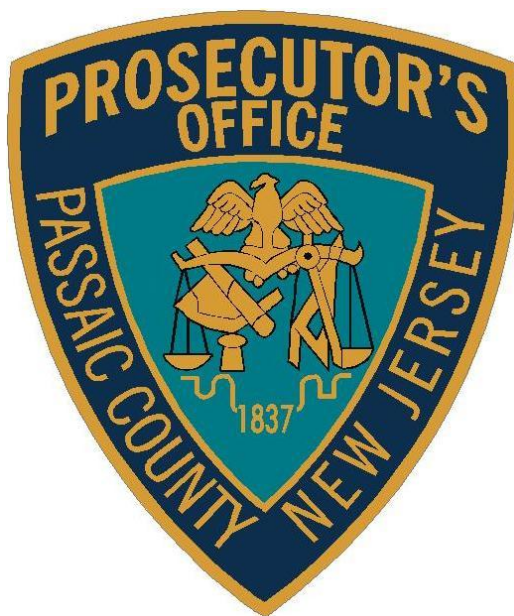


***Passaic County Prosecutor's Office  
Intelligence/Homeland Security Unit***



***Passaic County Overdose Environment  
January 1, 2017 - August 17, 2017***

The following document has been prepared and disseminated by the Passaic County Prosecutor's Office. The information contained in this Intelligence Report is LAW ENFORCEMENT SENSITIVE and may only be shared with or distributed to law enforcement personnel. Any individual who disseminates this Report to non-law enforcement personnel or any other person not authorized to receive it will be subject to criminal prosecution. Information contained in this report shall not be utilized as probable cause for an arrest or other law enforcement action.



PASSAIC COUNTY OVERDOSE ANALYSIS

JANUARY 1, 2017 -AUGUST 17, 2017



**BACKGROUND**

The Passaic County Prosecutor's Office continues to conduct analysis of autopsy reports retrieved from unattended deaths which occur in Passaic County that were investigated from January 1, 2017 through August 17, 2017 (*\*\*\*cut off date 08/17/2017.*) The content in this report is based on the information retrieved from the medical examiner's office which reports the cause(s) of these deaths being in the form of substance abuse overdoses.

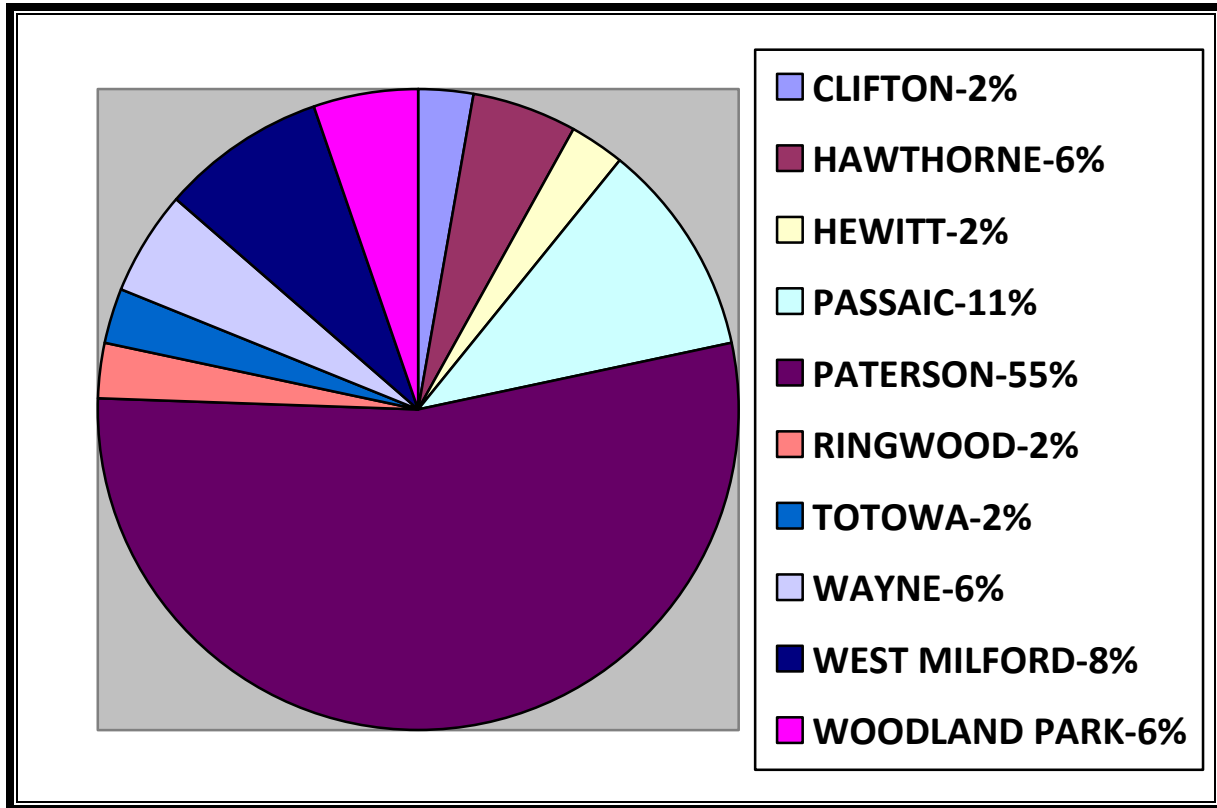
It should be noted that reporting documentation tends to be delayed, therefore the data may fluctuate as there are continuous updates to the fatal overdose reporting.

PASSAIC COUNTY OVERDOSE ANALYSIS

JANUARY 1, 2017 -AUGUST 17, 2017



**Key Findings**



Total Cases Reported= 37

**OVERVIEW**

During the time period listed, there were 37 Fatal Overdoses reported in Passaic County, New Jersey. The City of Paterson had the greatest amount of fatal drug overdoses with twenty (20) or 55% of the cases reported. The City of Passaic had the second highest amount with four (4) or 11% in their municipality West Milford had three (3) or 8%. Wayne, Wanaque and Hawthorne Borough each had two (2) or 6%. The remaining municipalities each had (1) or 2% of the cases reported.

There were seven individuals who reside outside of Passaic County that overdosed within our jurisdictions during this reporting period. Two were from Hudson County, two from Morris County, two from Bergen County and one individual from Ocean County

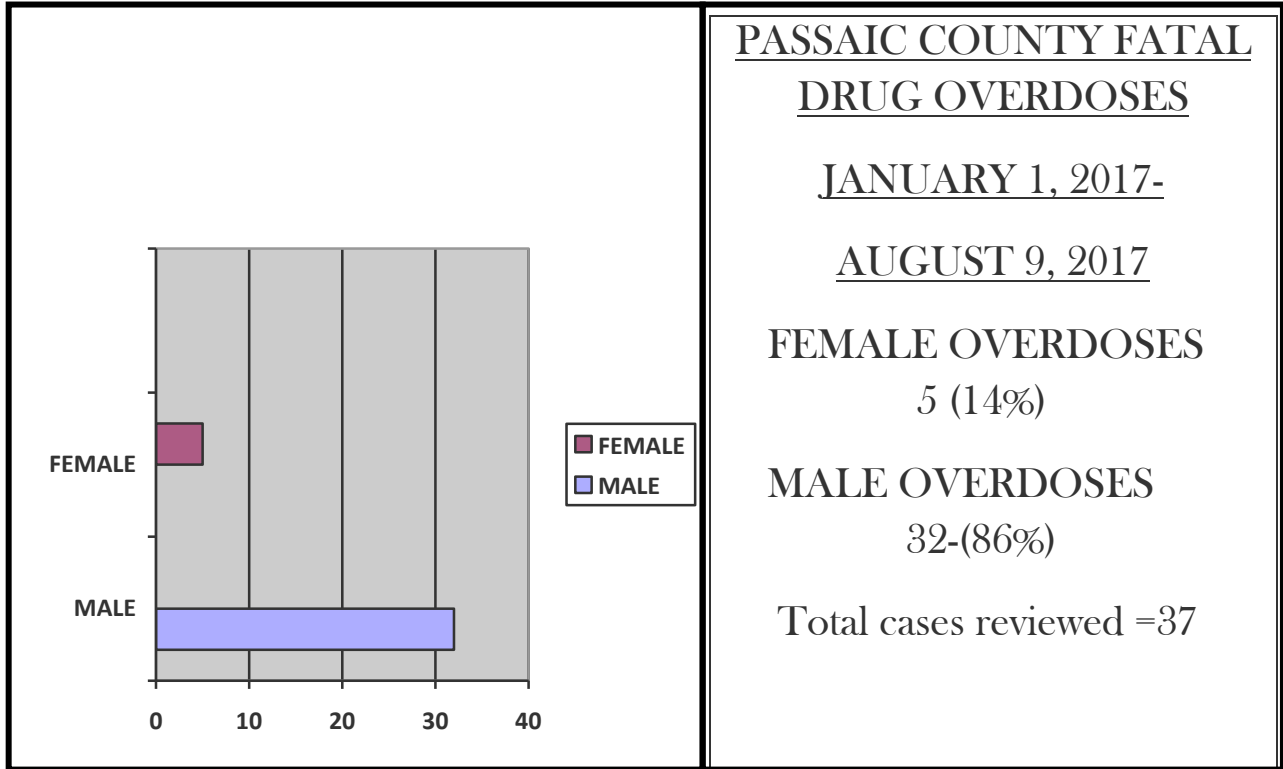


**PASSAIC COUNTY OVERDOSE ANALYSIS**



**JANUARY 1, 2017 -AUGUST 17, 2017**

**Fatal Overdoses by Gender**



**OVERVIEW**

Between January 1, 2017 and August 9, 2017 males overdosed at a greater rate at 86% with a total number of 32 cases. Females at a lower rate at 14% with a total of 5 cases.

The percentage of females overdosing has remained within the same percentage over this period of time compared to the last year. Males tended to overdose at a higher rate, usually caused by Heroin and Prescription drug abuse.

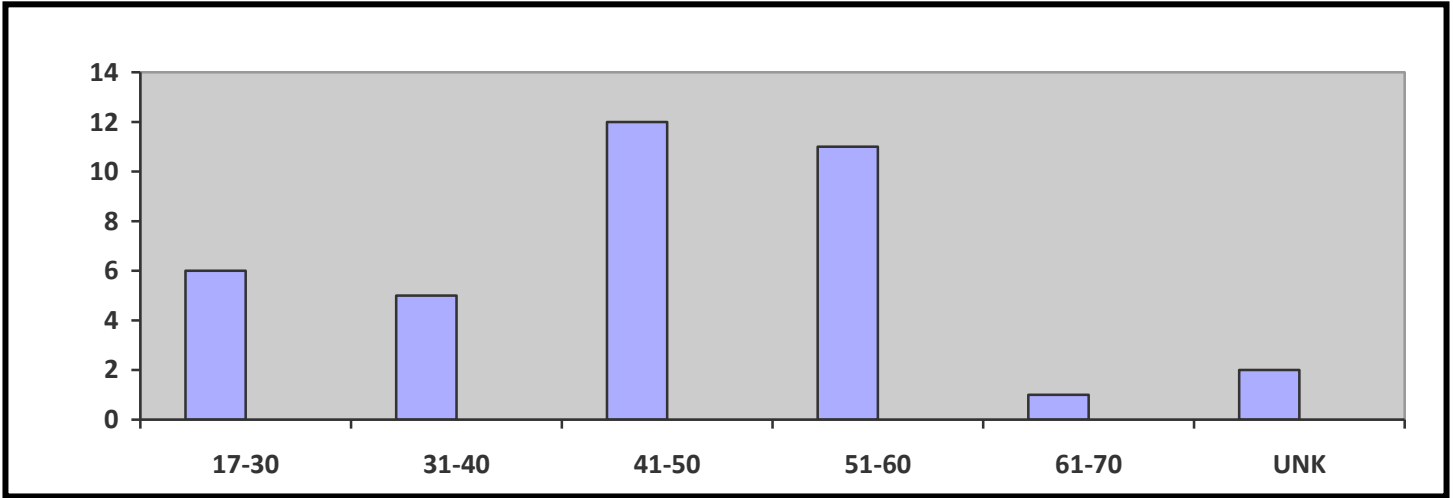


**PASSAIC COUNTY OVERDOSE ANALYSIS**



**JANUARY 1, 2017 -AUGUST 17, 2017**

**Fatal Overdoses by Age**



Total Cases Reviewed=37

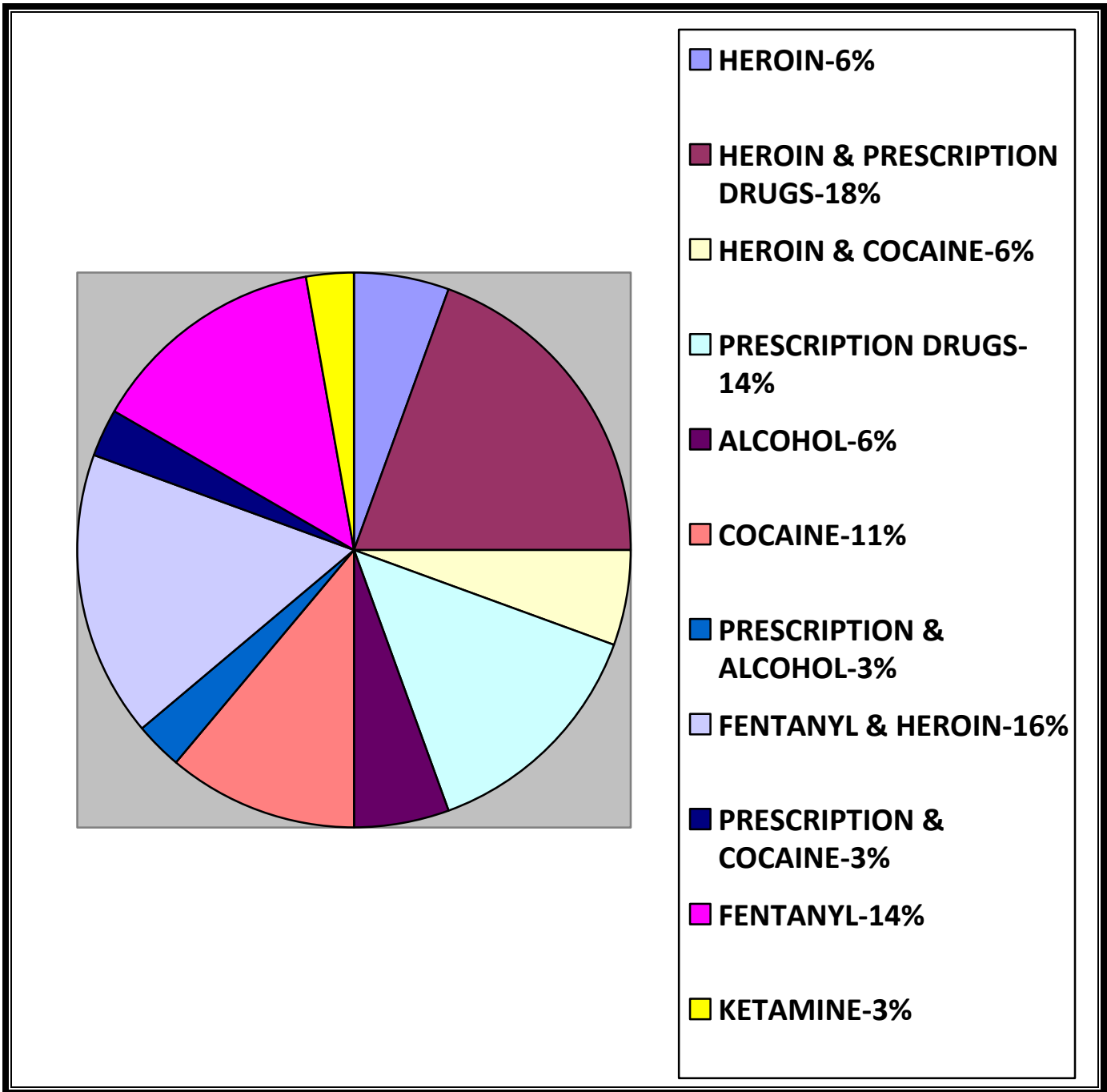
17-30 Year Old-6 Cases (16%)
31-40 Year Old-5 Cases (14%)
41-50 Year Old-12 Cases (33%)
51-60 Year Old-11 Cases (30%)
61-70 Year Old-1 Cases (2%)
UNKNOWN AGE-2 Cases (5%)

**OVERVIEW**

The greatest number of Fatal Overdoses reported was in the age group of 41-50 having twelve (12) cases or 33% of the total fatal overdoses reported. 51-60 year olds had the second highest with eleven (11) cases or 30% . 17-30 year olds had the third highest percentage at 16% with six (6) cases reported. 31-40 year olds had 14% with five (5) of the cases listed. 61-70 year olds had the least amount of cases reported with one (1) or 2%. It should be noted that the first age group category (17-30), was lowered once again in this report to for the first time to include 17 year olds, indicating that fatal overdoses have now victimized a juvenile within Passaic County. There were two cases or 5% where the age of the overdose victims were not able to be determined.

PASSAIC COUNTY OVERDOSE ANALYSIS

JANUARY 1, 2017 -AUGUST 17, 2017



Total Cases Reviewed=37



PASSAIC COUNTY OVERDOSE ANALYSIS

JANUARY 1, 2017 -AUGUST 17, 2017



**OVERVIEW**

The utilization of Heroin along Prescription drugs was responsible for 18% of the fatal overdose cases reported. This combination has reemerged during this reporting period as compared to earlier years reporting, replacing the sole use of Heroin which has dominated the cause of fatal overdoses in Passaic County for the past three years. Heroin and Heroin combined with other factors, make up a total of 40% of all Fatal Overdoses for this reporting period. Prescription drugs along with other factors was the cause equally with 40% of the cases reported as well.

As in the past several years, other factors have also been present (i.e.: alcohol intoxication) as the contributing causes in accidental/overdose deaths reported. These factors were responsible for 6% of the fatal overdoses reported.

Fentanyl or Fentanyl laced Heroin was traced in ten (11) or 30% of the thirty-seven (37) cases reported. We will continue to monitor any Fentanyl related overdose deaths to ensure the public's safety and raise awareness as this trend continues to emerge.

Cocaine has been very prevalent as well during this reporting period, with seven (7) or 11% of the cases reviewed

Ketamine, categorized as a “dissociative anesthetic,” which is used in powdered or liquid form as an anesthetic, usually on animals. It can be injected, consumed by humans in drinks, can be snorted, or added to joints or cigarettes. This drug has been reported for the first time in this time period as a cause of one fatal overdose in Passaic County.



**PASSAIC COUNTY OVERDOSE ANALYSIS**



**JANUARY 1, 2017 -AUGUST 17, 2017**

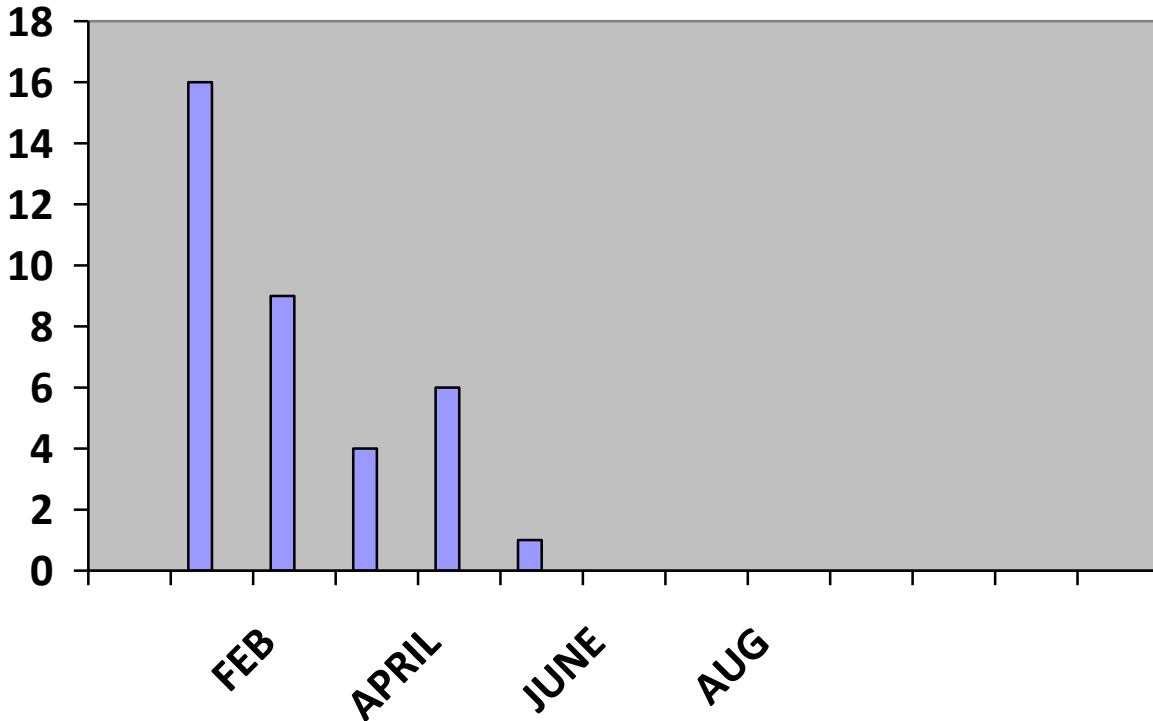
**FATAL OVERDOSES BY MONTH**

The tables and charts below illustrate the comparisons of overdoses reported in Passaic County

**January 1, 2017-August 9, 2016**

**(37 cases reported)**

Jan	Feb	March	April	May	June	July	Aug
16	9	4	7	1	0	0	0



**OVERVIEW**

It should be noted that when statistics were compared to first and second quarter 2016 as compared to first and second quarter 2017 (January 1, 2016-July 31, 2016 vs. January 1, 2017-July 31,2017) it revealed Passaic County to be trending at a greater rate of fatal over doses by 44% . We do expect these statistics to fluctuate as the Medical Examiner's reporting is delayed.





**PASSAIC COUNTY OVERDOSE ANALYSIS**



**JANUARY 1, 2017 -AUGUST 17, 2017**

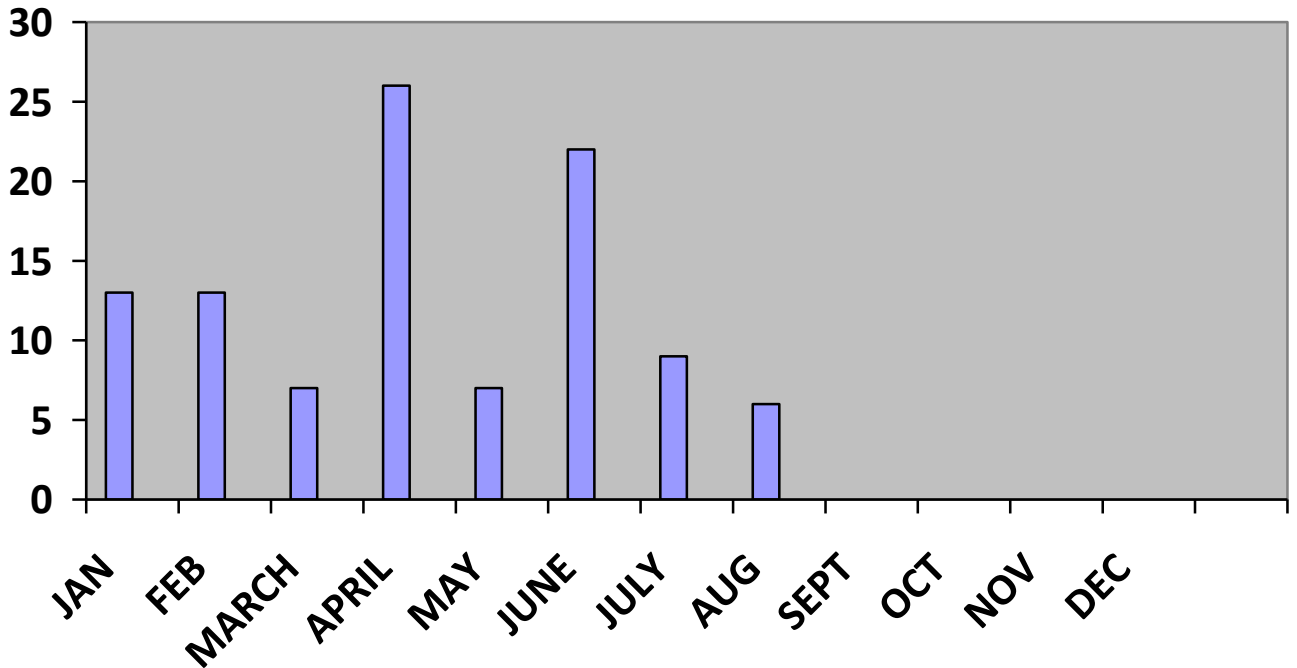
**NASAL NAXOLONE-NARCAN STATISTICS**

Nasal Naxolone-Narcan was implemented in Passaic County in August 2014 in an effort by the State of New Jersey to thwart fatal overdoses. The deployment of Narcan has dramatically increased over the past year as predicted. We expect this trend to continue as we are trending higher as well in 2017.

The table and chart\ illustrates the current 2017 Narcan Deployments by month in Passaic County.

**JANUARY 1, 2017-AUGUST 17, 2017 (103 DEPLOYMENTS REPORTED)**  
**COMPARE JANUARY 1, 2016-JULY 31, 2016 VS. JANUARY 1, 2017-JULY 31, 2017**  
**61 DEPLOYMENTS 2016 VS. 88 DEPLOYMENTS 2017 \*\*\*44% INCREASE**

JAN	FEB	MARCH	APRIL	MAY	JUNE	JULY	AUG	SEPT	OCT	NOV	DEC
13	13	7	26	7	22	8	6				

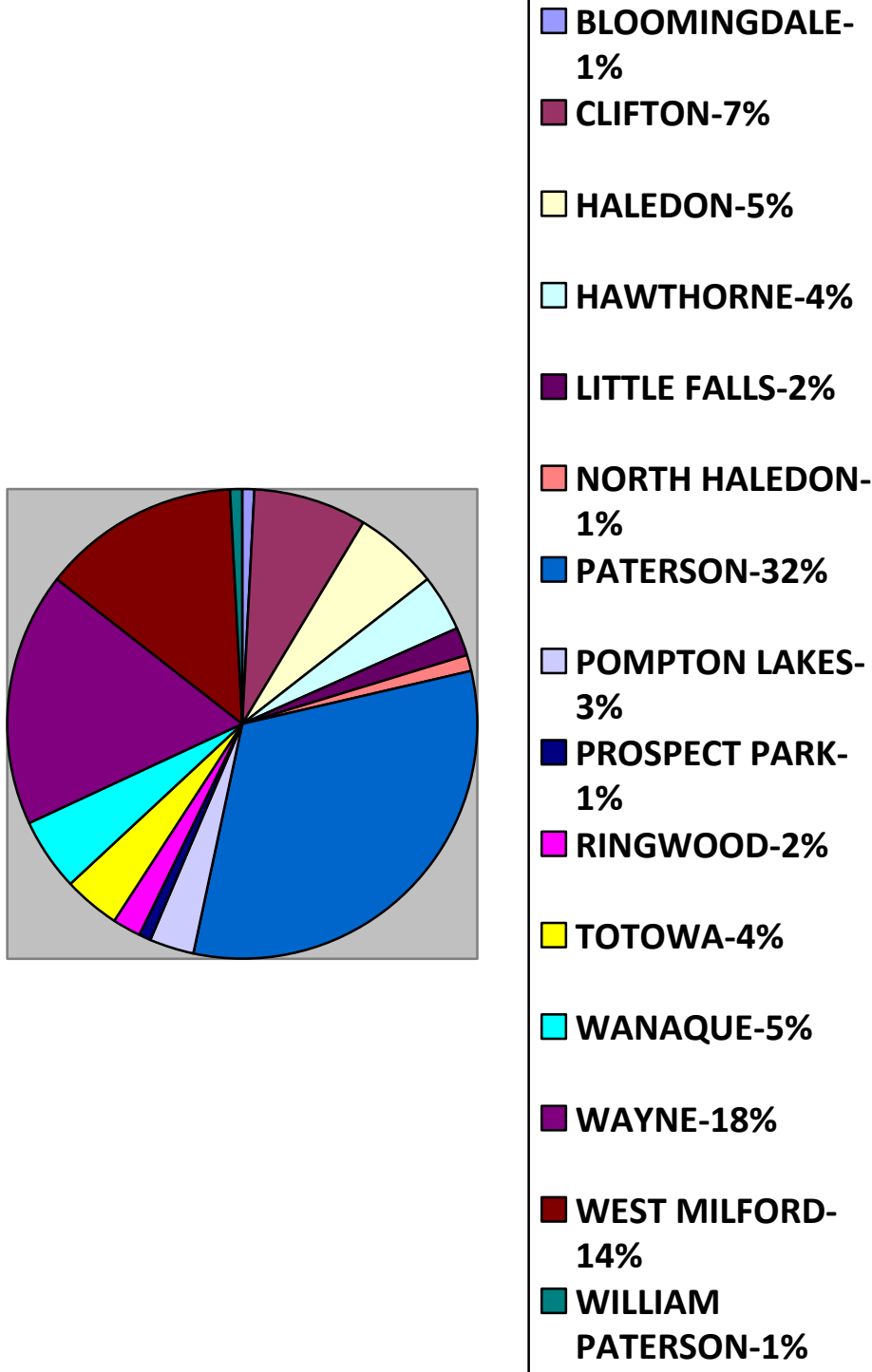




PASSAIC COUNTY OVERDOSE ANALYSIS



JANUARY 1, 2017 -AUGUST 17, 2017





PASSAIC COUNTY OVERDOSE ANALYSIS



JANUARY 1, 2017 -AUGUST 17, 2017

**OVERVIEW**

During the time period of January 1, 2017-August 9, 2017 there were one -hundred three (103) Nasal Naxolone -Narcan Deployments in Passaic County. Twelve (12) or 11% of which of these deployments resulted in a fatal overdose, where the individual who was administered Narcan was not able to be revived.

There were a total of one-hundred eleven (111) for the entire year 2016 (January 1, 2016-December 31, 2016) indicating the county will likely surpass the one hundred eleven (111) 2016 deployments in 2017.

The chart above illustrates these deployments administrated by Passaic County Police Departments.

Paterson Police Department administered the greatest amount of Narcan with thirty-three (33) or 32% of the deployments (please note that one of the deployments in the City of Paterson was administered by the Passaic County Sheriff's Department). Wayne Police Department had the second highest with 18% followed by West Milford Police Department with 14% of the deployments.

Clifton Police Department had seven (8) or 7% of the deployments, Haledon, had six (6) or 5% of the deployments listed. Wanaque had five (5) or 5%. Hawthorne and Totowa Boroughs both had four (4) or 4% of the deployments.

Pompton Lakes Police Department had three (3) or 3% of the deployments listed.

Little Falls Police Department & Ringwood Police Department had two (2) or 2% of the deployments.

The remaining agencies listed each had one (1) or 1% of the deployments.



**PASSAIC COUNTY OVERDOSE ANALYSIS**

**JANUARY 1, 2017 -AUGUST 17, 2017**



**IMPACT AND RECOMMENDATIONS**

Heroin, Cocaine and Prescription drug abuse remains to be problematic in this county and throughout New Jersey. Substance abuse, fatal and non-fatal overdoses continues to be a priority to be addressed in Passaic County. Although Passaic County is experiencing an increase in fatal overdoses, municipalities have remained vigilant regarding Narcan deployments aiding in thwarting additional overdose fatalities.

Analysis should be continued to monitor these statistics which will heighten awareness in the case of increased overdose activity as well as any new drug trends continuing to emerge to cause additional overdoses.

With an increase of the presence of Fentanyl, it is imperative that Heroin task force initiatives as well as outreach and awareness to Passaic County communities be maintained as an effort in reducing these overdose trends.

For additional information regarding this Intelligence Product please contact:

***Detective First Grade Nancy Petrara-Stafyleras  
Passaic County Prosecutor's Office  
Intelligence/Homeland Security Unit***

**[nstafyleras@passaiccountynj.org](mailto:nstafyleras@passaiccountynj.org)**

The following document has been prepared and disseminated by the Passaic County Prosecutor's Office. The information contained in this Intelligence Report is LAW ENFORCEMENT SENSITIVE and may only be shared with or distributed to law enforcement personnel. Any individual who disseminates this Report to non-law enforcement personnel or any other person not authorized to receive it will be subject to criminal prosecution. Information contained in this report shall not be utilized as probable cause for an arrest or other law enforcement action.