

County Of Passaic Department of Senior Services invites you to

# A ROAD MAP TO CAREGIVING:

**Where to Start and What to Say,  
Expert Advice for Every Step of the Way**

In recognition of National Caregivers Awareness Month, Passaic County Department of Senior Services is teaming with Dawn Thomas, MSW, LCSW, C-ASWCM-Aging Life Care Professional to provide a comprehensive roadmap to caregiving. Dawn will be discussing issues such as long term care planning, when to make the hard decisions, and what to say to your loved ones in need. Passaic County Care Managers will be discussing programs and resources that are available in Passaic County, and, will be able to provide individual attention to your specific needs.

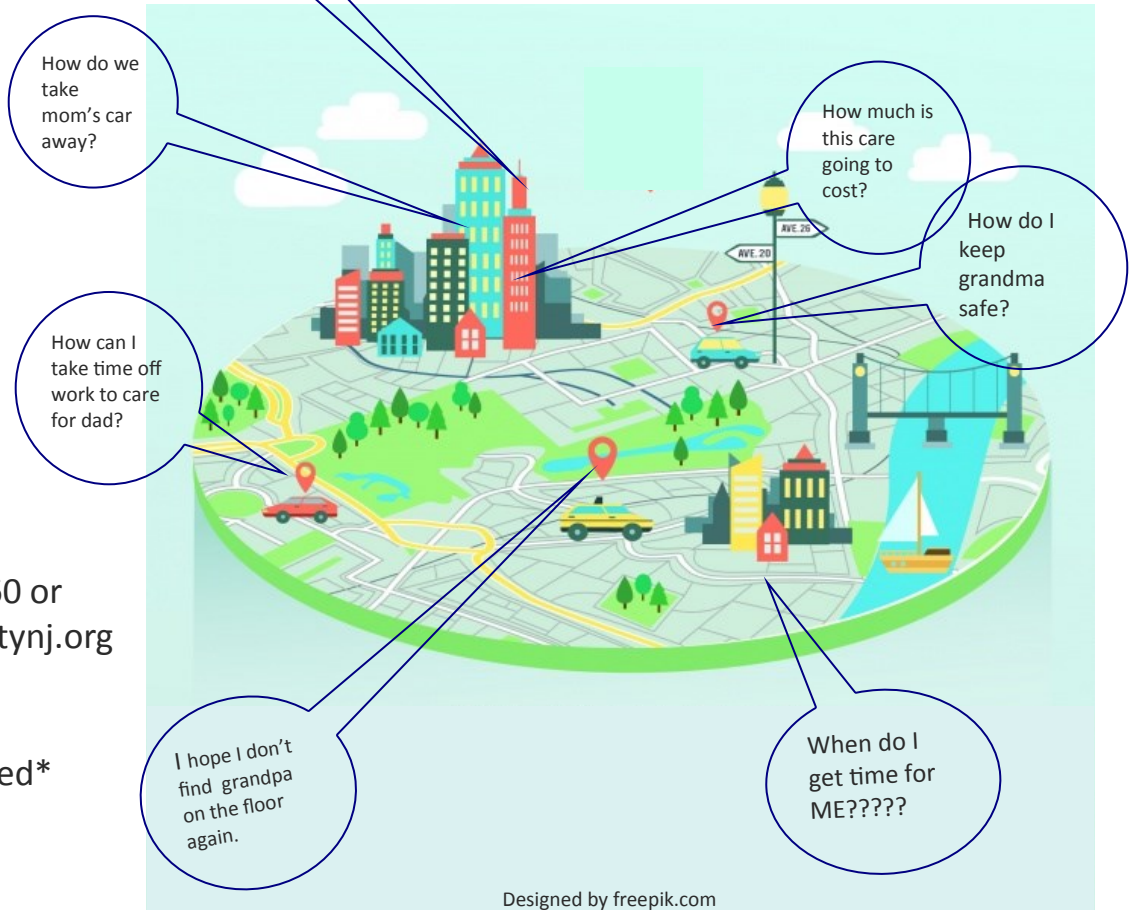
**Tuesday,  
November 13**

**6:00 pm**

Event Location:  
930 Riverview Drive,  
Suite 200  
Totowa , NJ 07512

RSVP to (973)569-4060 or  
sheilad@passaiccountynj.org  
by 11.12.2018

**\*Seating is Limited\***



Designed by freepik.com

Dawn Thomas is a Licensed Clinical Social Worker and has been working in the field of aging for over 30 years. She obtained a Bachelor's degree in Family Therapy from Messiah College and a Master's in Social Work from Rutgers University. Dawn has worked in Homecare, Hospice and Geriatric Care Managing all with the emphasis of maintaining seniors safely in the least restrictive environment. She currently is the owner of Family Support Care Management LLC. where she provides Aging Life Care and Psychotherapy services to seniors and their families.