



Technical Memorandum: Environmental Justice

Date: 9/17/2021 (revised 12/15/2021, revised 5/26/2022, revised 06/29/2022)

Contents

I.	Environmental Justice Analysis	2
A.	Purpose	2
B.	Methodology	2
C.	Summary of Findings	3
D.	Findings in Relation to NJTPA Title VI Implementation Plan	5
E.	Conclusions	7
II.	Appendices	8
	Appendix A: Data Analysis of Indicators of Potential Disadvantage	9
	Appendix B: Composite EJ Score	20
	Appendix C: Indicators of Potential Disadvantage by Census Block Group	22



I. Environmental Justice Analysis

A. Purpose

According to the United States Department of Transportation (USDOT), the definition of environmental justice includes **“fair treatment and meaningful involvement of all people, regardless of race, ethnicity, income, national origin or educational level” with respect to laws, regulations, and policies.**

Environmental Justice (EJ) communities have been traditionally underrepresented in decision-making process related to public infrastructure projects and are disproportionately exposed to their negative impacts.

The project team conducted this Environmental Justice (EJ) analysis, reviewing demographic data **throughout Passaic County’s 16 municipalities**, in order to:

- Identify language services for outreach
- Ensure fair distribution of planned improvements
- Ensure that planned projects do not negatively affect communities

B. Methodology

The project team used U.S. Census 2019 5-Year American Community Survey estimates (ACS) for the 2015-2019 period in Passaic County as the primary data source for this analysis. With the objective to identify populations that can be considered indicators of potential disadvantage, the project team tabulated and mapped the following data at the census block group level:

- Minority Population – Percentage of the population identified as a racial/ethnic minority
- Low Income Households – Percentage of households with income below poverty level in the past twelve months
- Limited English Proficiency Household – Percentage of the households that speaks a language **other English, and a “Limited English-Speaking household”**
- Minor Population – Percentage of the population that are people 17 years or younger
- Senior Population – Percentage of the population that are people 65 years or older
- Disabled Population – Percentage of the civilian population 18 years and over for whom poverty status is determined with a disability
- Zero-Vehicle Households – Percentage of households without access to a car
- Foreign-Born Population – Percentage of the population that is foreign-born¹

¹ Place of Birth data was only available at the Census Tract level.



The data for each indicator was compared to the NJTPA regional averages and an Environmental Justice Score (EJ Score) was determined for each indicator, based on the standard deviation relative to the NJTPA regional average (in a manner similar to the DVRPC Indicators of Potential Disadvantage methodology²). EJ Scores were determined as follows:

- Well-below average: ≤ -1.5 Std.Dev. (score of 0)
- Below average: $-1.5 - -0.5$ Std.Dev. (score of 1)
- Average: $-0.5 - 0.5$ Std. Dev. (score of 2)
- Above average: $0.5 - 1.5$ Std. Dev. (score of 3)
- Well above average: > 1.5 Std. Dev. (score of 4)

Note that the census block groups with estimates of zero were manually assigned a score of 0 instead of 1. For some of the indicators analyzed, the 5-year estimates at the block group level were found in different sets of tables and have a substantial margin of error.

The findings of this analysis of the ACS data are summarized below (in Section C) and assessed in relation to the [NJTPA Title VI Implementation Plan](#) (in Section D). The findings for each indicator are presented in greater detail in Appendix A.

C. Summary of Findings

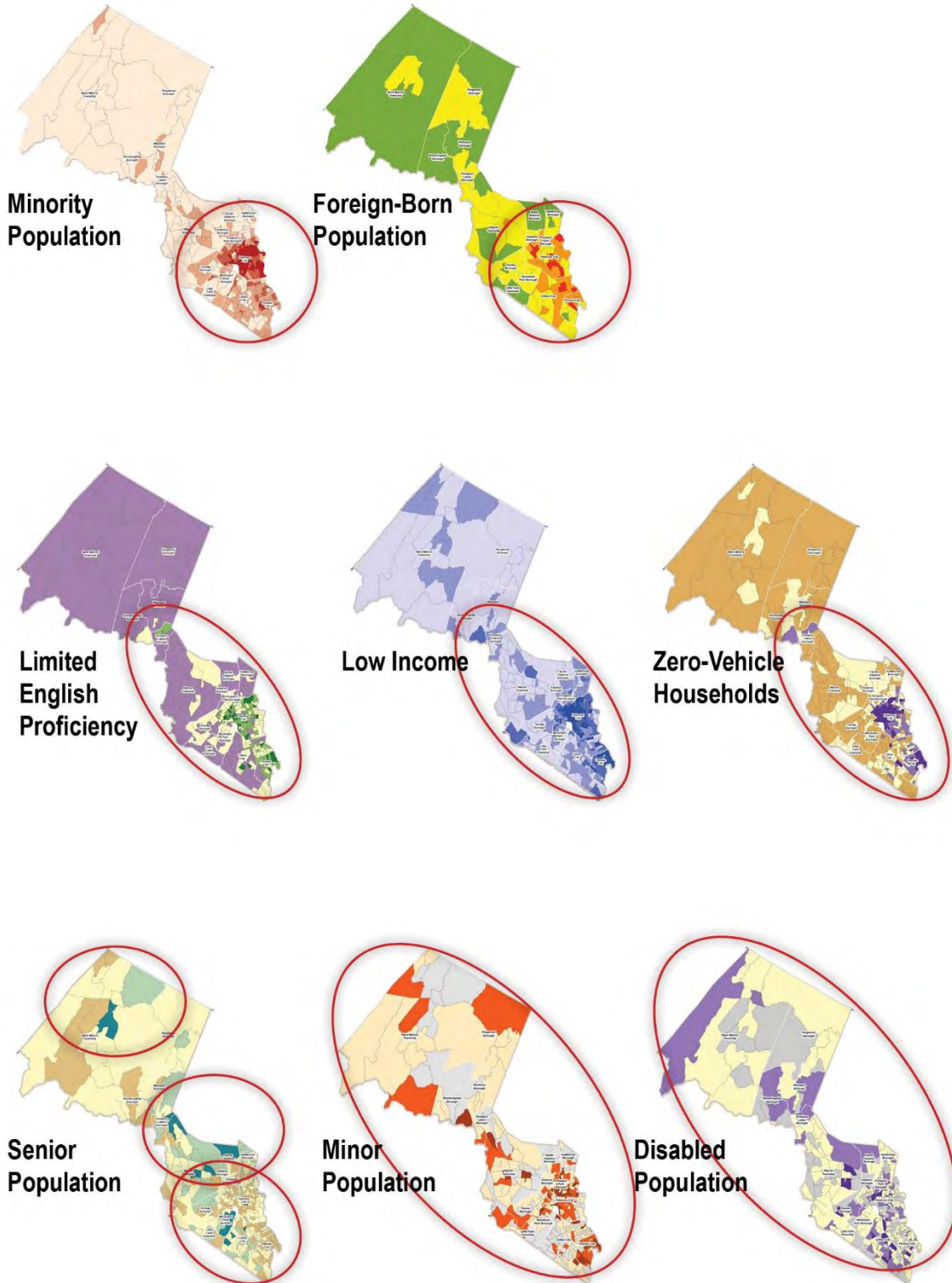
Based on the methodology described above, the following geographic trends were noted for the indicators of potential disadvantage:

- Minority and foreign born populations were most prevalent in the southern, more urbanized portion of Passaic County.
- Households with limited English proficiency, households below the poverty level, and households that do not own any cars were most prevalent in the southern, more urbanized portion of Passaic County, but also extended north into the central portion of the County.
- Populations of senior citizens (age 65 and older), minors (age 17 and under), and people with disabilities were distributed to varying degrees throughout Passaic County.

The graphic on the following page provides thumbnail image comparison of the geographic dispersal of indicators of potential disadvantage. Appendix A provides detailed mapping for each indicator.

² [Equity Analysis for the Greater Philadelphia Region - v2.0 \(dvrpc.org\)](#), accessed December 2020.

Graphic: Geographic Comparison of Indicators of Potential Disadvantage





D. Findings in Relation to NJTPA Title VI Implementation Plan

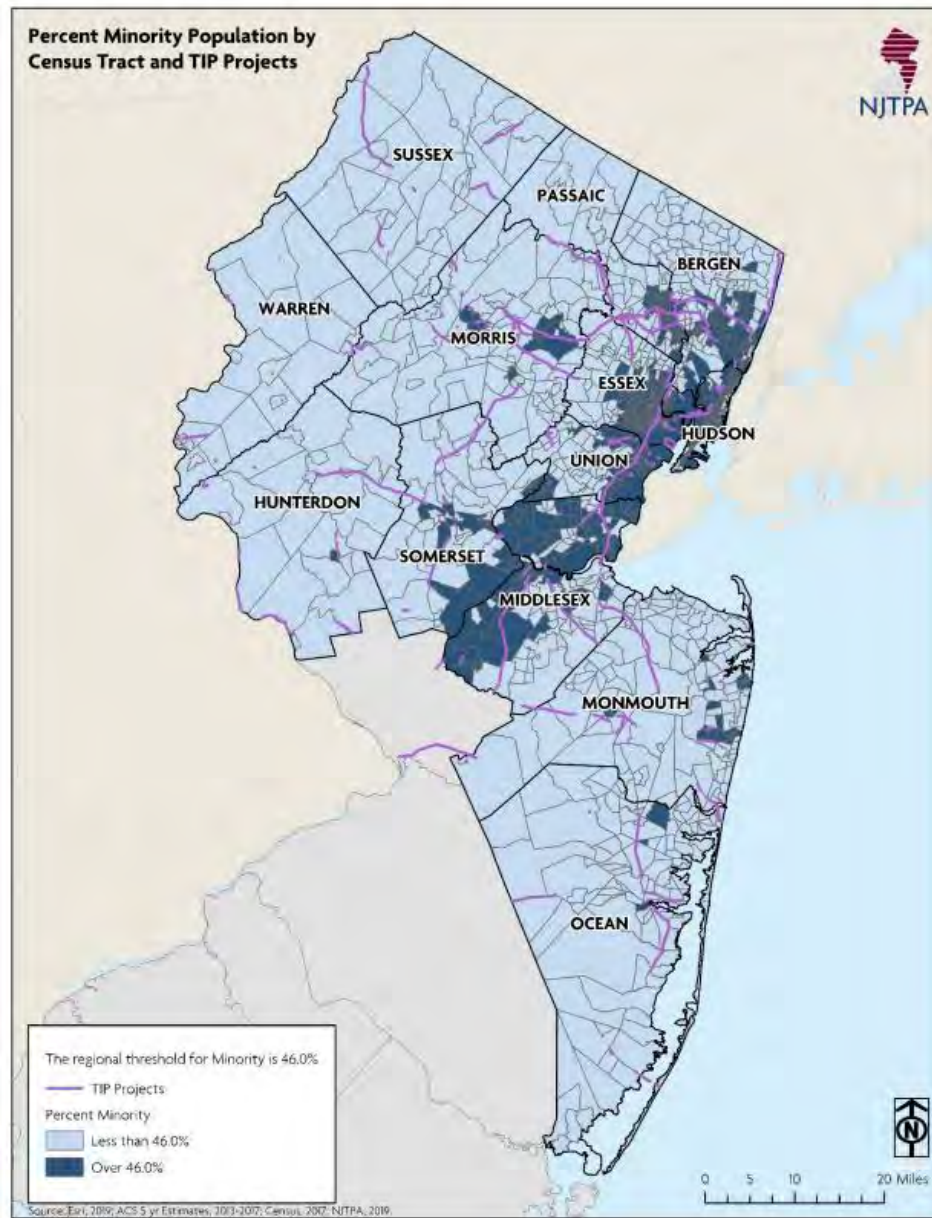
An important outcome of the EJ Analysis is to identify ways that planning procedures carried out for *BIKEPassaicCounty* to comply with the [NJTPA Title VI Implementation Plan](#) (January 2021).

Considerations (in reference to sections of the *Title VI Plan*) include:

- **Section 3.2 Public Outreach and Involvement**
In Passaic County, 16.2 percent of the population by household speaks Spanish (see Table 3: PASSAIC COUNTY LANGUAGES). **“Under the Safe Harbor Provision, NJTPA is obligated to provide translation of written materials related to the planning products and analyses into languages that meet or exceed the established 5 percent or 1,000-person [whichever is less] threshold”** (*Title VI Plan*, page 16). Therefore, translation of written materials should be provided for *BIKEPassaicCounty* in Spanish. Other languages that meet or exceed these thresholds should be evaluated on a case by case basis. The *BIKEPassaicCounty* [project website](#) and [online project questionnaire](#) both use Google Translate as a means to communicate in languages other than English. Graphics developed to advertise Public Meetings for *BIKEPassaicCounty* (to be posted on social media) include text in both English and Spanish. For the Public Meeting on December 8, 2021, a live Spanish captioning service was used, in addition to providing a person who can translate during the Q&A session at the end of the meeting. These methods will be repeated for subsequent outreach events.
- **Section 4.6 Mobility Needs for Minority Populations**
“The NJTPA updated its *Coordinated Human Services Transportation Plan, Go Farther*, in 2017. The plan offers comprehensive recommendations for meeting the transportation needs of four target populations: persons ages 65 and older, low income individuals, people with disabilities and veterans. The planning process included extensive public outreach to gather input from the **target populations”** (*Title VI Plan*, page 40). As *BIKEPassaicCounty* advances to define a preliminary network, priority bikeways, and concept level plans, the input collected in the *Go Farther Plan* should remain in consideration, especially as related to the populations of persons with disabilities, minors, and senior citizens. For instance, in prioritizing bikeways for implementation, there may be consideration of factors such as travel mode (bicycle only, or bicycle and pedestrian) and daily mobility needs in order to provide access to transit, schools, healthcare, commerce, and other community destinations for people who do not drive. Where shared use (bicycle and pedestrian) paths are planned, topography and considerations for accessible grading design should be explored in order to create inclusive trail facilities. Additionally, where bikeways are envisioned along existing roadways, it will be important to ensure that conditions and access for people on foot, especially those with disabilities, are not negatively impacted.
- **Section 4.7 Transportation Improvement Program**
“As part of federal regulation FTA C 4702.1B, MPOs are required to provide a demographic map that overlays the percent of minority and non-minority populations as identified by Census or ACS data, at census tract or block group level, and charts that analyze the impacts of the distribution of state and federal funds in the aggregate for transportation purposes, including **federal funds managed by the MPO as a designated recipient”** (*Title IV Plan*, page 40). As *BIKEPassaicCounty* advances to define a preliminary network, priority bikeways, and concept level plans, the project team can overlay proposed routes in a manner similar to Figure 9 (page



41, shown below) of the *Title VI Plan*. Understanding that the proposed bikeway network in *BIKEPassaicCounty* will represent a planned level of future investment, the objective of this step will be to ensure that priority projects and future investment/benefit are equitably distributed in minority areas.



Map showing Percent Minority Population by Census Tract and TIP Projects (Source: NJTPA Title VI Implementation Plan, figure 9, page 41).

- Section 4.8: Disparate Impacts
The project team should deliberately and critically reflect on the *BIKEPassaicCounty* proposed bikeway network to ensure that there are no disparate impacts on the basis of race, color, physical ability, age, national origin, or other indicators of potential disadvantage.



E. Conclusions

The purpose of the environmental justice analysis is to ensure that the outreach and recommendations are equitably distributed throughout the County. Based on the EJ data mapping, areas with a high concentration of each of the EJ indicators should be considered while developing recommendations and conducting outreach.

Areas with a high concentration of minorities, limited-English speaking persons and foreign-born population should be engaged throughout the process with the development of bi-lingual materials and simple visuals. Translation services should be available at these events. Paterson City, Prospect Park Borough and Passaic City have a high concentration of minorities compared to the County and the NJTPA average. These municipalities in addition to Haledon Borough, Woodland Park Borough and Clifton City also have a high concentration of foreign-born population when compared to the County and the NJTPA regional average. Passaic City, Paterson City, Haledon Borough and Clifton City have a higher percentage of LEP population than the County and NJTPA. As mentioned earlier, several different languages are spoken within the County and the project website is using translation technology to reach people who speak languages other than English. Spanish language translation is being provided for outreach materials and public meetings. The project team should ensure that representatives from the EJ community organizations are involved in the outreach process and can be invited to serve on the Steering Committee.

Outreach should be conducted at venues and at times that are easily accessible by all (seniors, minors, persons with a disability, low income households and households with limited access to cars). Municipalities with a higher concentration of senior population than the County and NJTPA are North Haledon Borough, Wanaque Borough and Woodland Park Borough. Passaic City, Prospect Park Borough, and Paterson City have a high concentration of minors under 17 years when compared to the County and NJTPA. Totowa Borough, Pompton Lakes Borough and Wanaque Borough have a higher concentration of persons with a disability than the County and the NJTPA regional average. Of the 16 municipalities, Passaic City and Paterson City have the highest concentrations of low income households and households with no access to cars when compared to the County and NJTPA.

While developing recommendations the project team should tailor the recommendations to the specific needs of the EJ population such as proximity to day cares, senior centers, and easy access to transit and jobs for seniors, minors, low income, and zero car households. Additionally, network recommendations should be fairly distributed throughout the County and should do not disproportionately affect the EJ populations.

This analysis is a data-driven view of where the project team should engage stakeholders and understand the unique travel needs, risks and tailor communication materials to the vulnerable users and disadvantaged groups in the County. It is recommended that the project team combine this data-driven view with input from the local stakeholders that may have additional insights related to environmental justice populations.



II. Appendices

Appendix A: Data Analysis of Indicators of Potential Disadvantage9
Appendix B: Composite EJ Score20
Appendix C: Indicators of Potential Disadvantage by Census Block Group 22



Appendix A: Data Analysis of Indicators of Potential Disadvantage

Overview

The project team analyzed the 5-year ACS demographic data for the 2015-2019 period for Passaic County. As mentioned previously, the eight indicators assessed included minority population, foreign-born population, low income population, limited English proficiency population, minor population, senior population, disabled population, and zero vehicle households. Table 1 below shows the percentage of households or persons that qualify at the county level for each of the demographic indicators:

Table 1: PASSAIC COUNTY PROFILE

Environment Justice Demographic Indicator ³	Count	Percentage
UNIVERSE: HOUSEHOLDS	165,429	-
Households with Income below Poverty Level	24,902	15.1%
Limited English Proficiency	21,445	13.0%
Zero Vehicle Households	27,445	16.6%
UNIVERSE: TOTAL POPULATION	503,637	-
Minority Population	181,510	36.0%
Foreign-Born Population	154,270	30.6%
Minors (under 17 years)	120,481	23.9%
Senior Population (65+ years)	71,897	14.3%
UNIVERSE: CIVILIAN POPULATION OVER 18 YEARS FOR WHOM POVERTY STATUS IS DETERMINED	376,653	-
Disabled population	39,439	10.5%
<p>Source: US Census Bureau ACS 2015-2019 5-Year Estimates</p> <ul style="list-style-type: none"> • Table B17017 Poverty Status In The Past 12 Months By Household Type By Age Of Householder • Table C16002 Household Language By Household Limited English Speaking Status • Table B25044 Tenure By Vehicles Available • Table B02001 Race • Table B01001 Sex By Age • Table C21007 Age By Veteran Status By Poverty Status In The Past 12 Months By Disability Status For The Civilian Population 18 Years And Over • Table B05002 Place of Birth By Nativity And Citizenship Status 		

³ Data for all indicators except for Place of Birth was available at the census block group level. Place of Birth data was only available for census tracts.



Table 2: DATA BY MUNICIPALITY

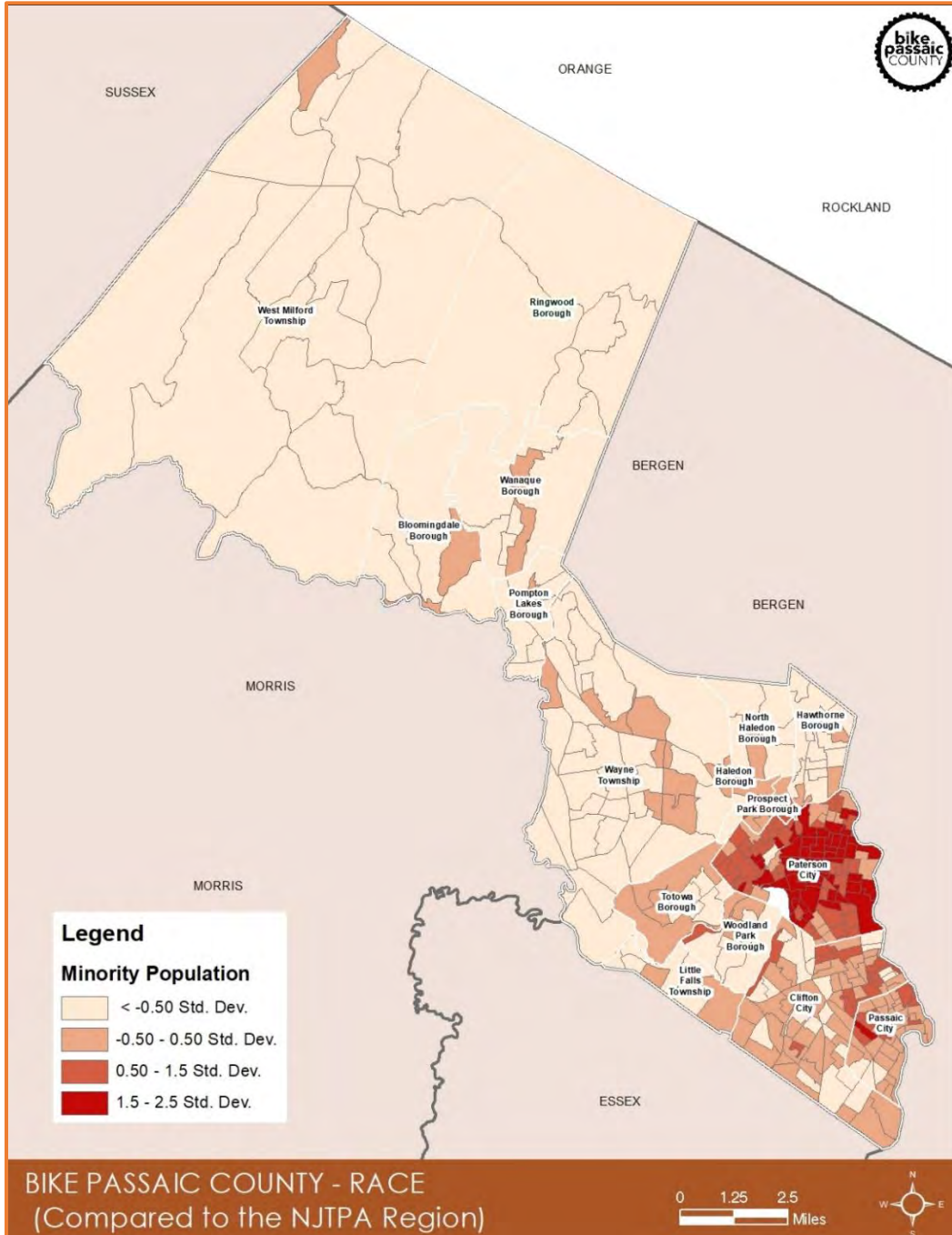
Environment Justice Demographic Indicator	UNIVERSE: HOUSEHOLDS (within each municipality)			UNIVERSE: TOTAL POPULATION (within each municipality)				UNIVERSE: CIVILIAN POPULATION OVER 18 YEARS (within each municipality)
	Households with Income below Poverty Level	Limited English Proficiency	Zero Vehicle HH	Minority	Foreign Born	Minors (under 17 years)	Seniors (65+ years)	Disabled population
NJTPA Region	9.9%	8%	12.3%	32.9%	25.8%	22.2%	15.7%	11.5%
Passaic County	15.1%	13.0%	16.6%	36.0%	30.6%	23.9%	14.3%	10.5%
Bloomingtondale Borough	5.1%	3.7%	6.2%	10.1%	12.4%	21.2%	13.0%	10.3%
Clifton City	9.4%	10.7%	10.5%	32.0%	36.9%	20.0%	16.3%	11.3%
Haledon Borough	10.3%	11.6%	9.8%	30.0%	33.4%	21.5%	13.0%	9.2%
Hawthorne Borough	6.2%	1.8%	7.1%	13.7%	15.6%	19.7%	16.6%	9.8%
Little Falls Township	5.6%	3.6%	7.6%	11.6%	15.4%	16.6%	17.1%	10.5%
North Haledon Borough	3.4%	3.4%	9.1%	5.8%	13.6%	16.8%	23.3%	12.6%
Passaic City	30.2%	26.6%	33.3%	35.4%	38.8%	32.2%	8.9%	10.3%
Paterson City	27.8%	23.3%	31.3%	69.7%	40.6%	27.3%	11.3%	9.9%
Pompton Lakes Borough	6.7%	4.8%	7.6%	14.1%	20.9%	18.7%	13.6%	13.1%
Prospect Park Borough	14.9%	5.1%	14.8%	37.9%	34.4%	28.7%	9.8%	10.1%
Ringwood Borough	1.5%	0.6%	1.1%	9.3%	11.1%	22.2%	17.0%	9.7%
Totowa Borough	3.2%	5.0%	3.2%	16.5%	22.0%	16.7%	19.7%	13.3%
Wanaque Borough	4.6%	2.4%	5.0%	10.9%	12.7%	19.1%	21.6%	12.7%
Wayne Township	3.7%	3.5%	3.8%	13.0%	20.0%	20.9%	19.2%	10.0%
West Milford Township	4.6%	1.3%	3.2%	7.7%	9.7%	21.4%	15.1%	10.1%
Woodland Park Borough	8.4%	7.5%	3.2%	22.4%	27.3%	22.1%	20.1%	8.8%



I. RACE

Per the ACS 2015-2019, 36 percent of the County's population identify as a minority population. The "White" field was subtracted from the total population to determine the population that qualifies as a racial minority. Of the 16 municipalities; only Paterson City (69.7 percent) and Prospect Park Borough (37.9 percent), have higher concentrations of minorities when compared to the County as a whole. Passaic City (35.4 percent) and Clifton City (32 percent) also have a high concentration of minorities. Map 1 shows the distribution of minorities by census block groups in Passaic County when compared to the NJTPA regional average (32.9 percent).

Map 1: RACE

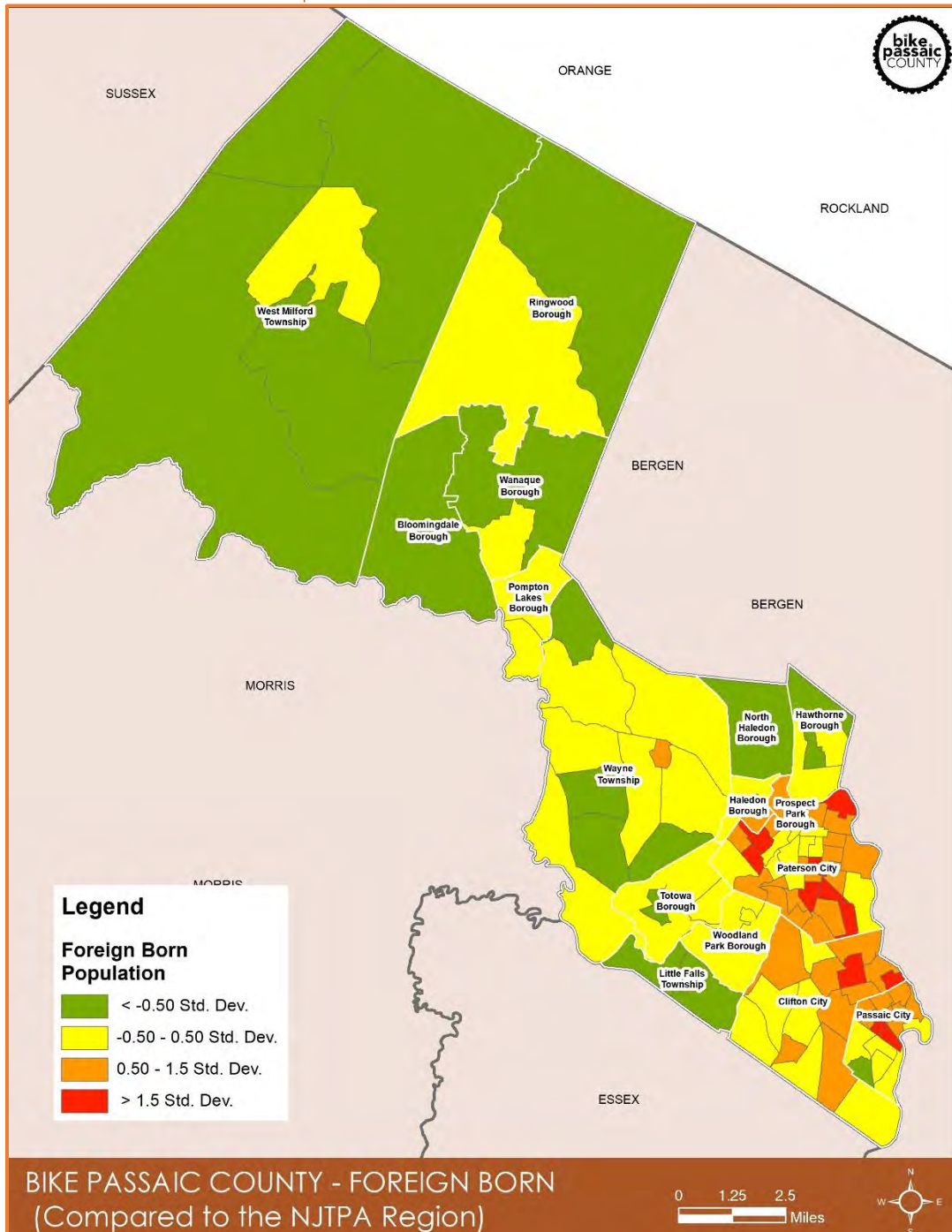




II. FOREIGN-BORN POPULATION

Per the 2015-2019 ACS data, just over 30 percent of the County's population is foreign-born compared to over 25 percent for the NJTPA region. Paterson City (41 percent) and Haledon Borough (40 percent) have the highest percentage of foreign-born population. Passaic City, Clifton City and Prospect Park Borough and Woodland Park Borough have higher concentrations of foreign-born population than the NJTPA regional average of 25 percent. Map 2 shows the distribution of foreign-born population by census tracts in Passaic County when compared to NJTPA.

Map 2: FOREIGN-BORN POPULATION

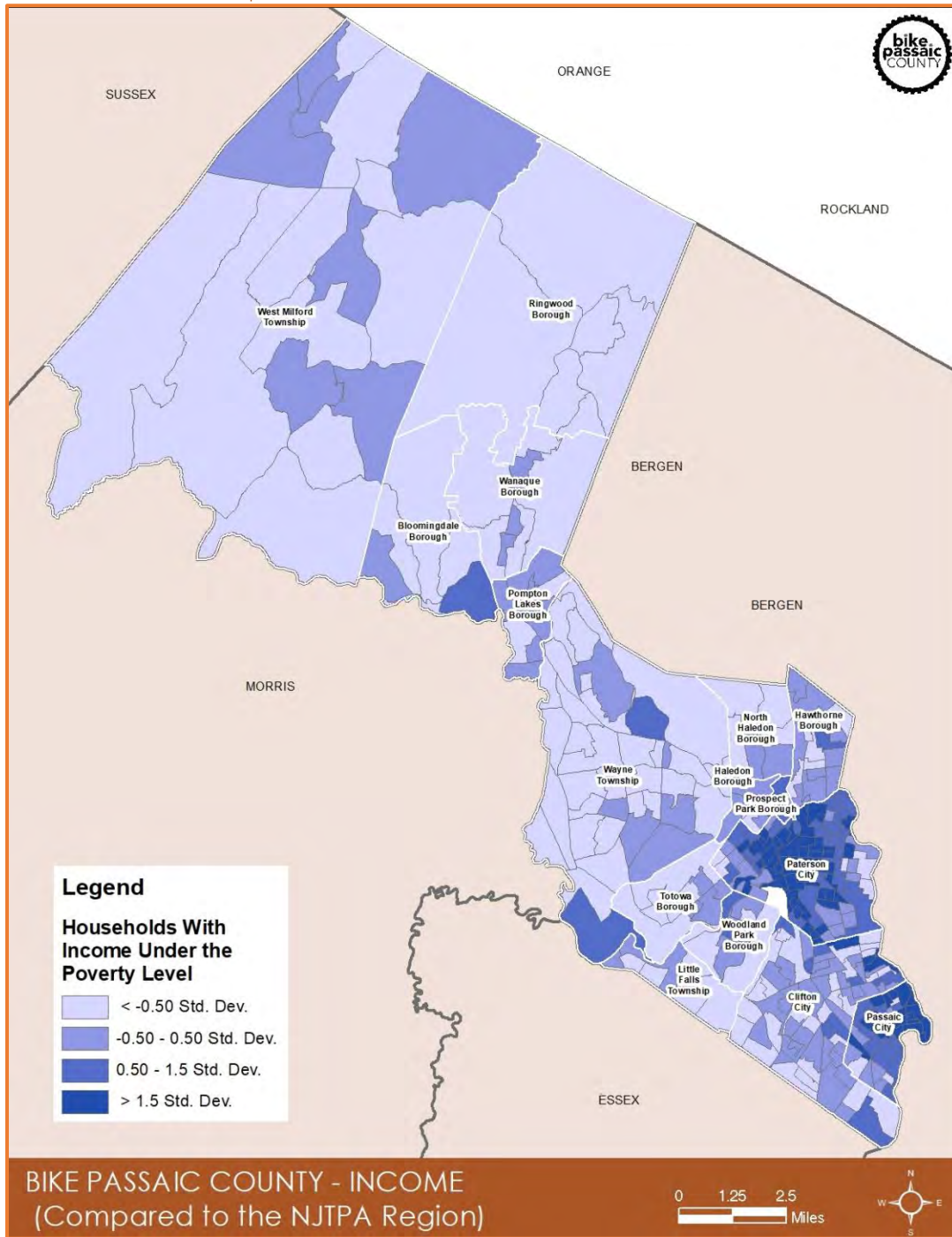




III. INCOME

The ACS data indicates that just over 15 percent of the County's population have incomes below the poverty level. Of the 16 municipalities, Passaic City (30.2 percent) and Paterson City (27.8 percent) both have a higher percentage of households with incomes below the poverty level than the County. Map 3 shows the distribution of households with incomes below the poverty level by census block groups in Passaic County when compared to the NJTPA regional average (9.9 percent).

Map 3: HOUSEHOLDS BELOW POVERTY LEVEL

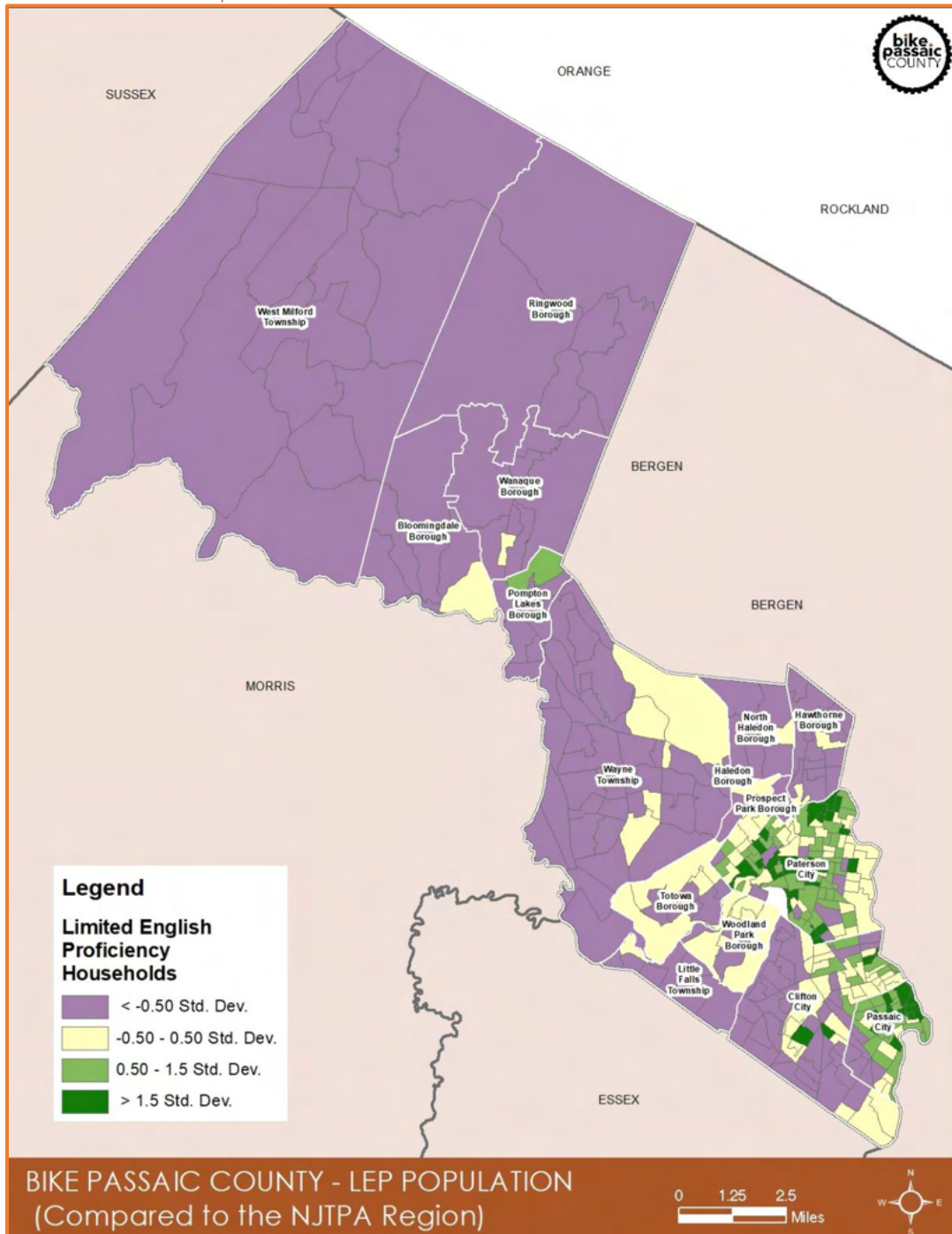




IV. LIMITED ENGLISH PROFICIENCY HOUSEHOLDS

With regards to English speaking status, the 2015-2019 ACS data indicates that 13 percent of the County's households are "Limited English speaking households". These households speak languages other than English as per ACS Table C16002. Of the 16 municipalities, Passaic City (26.6 percent) and Paterson City (23.3 percent) both have a higher percentage of "Limited English speaking households" than the County. Map 4 shows the distribution of limited English speaking households by census block groups in Passaic County when compared to the NJTPA regional average (8 percent).

Map 4: LIMITED ENGLISH SPEAKING HOUSEHOLDS





With regards to specific languages, ACS data for person 5 years and above, indicates that more than 20 percent of the County’s population “speaks English less than very well”. This amounts to almost 100,000 persons above 5 years in the County that primarily speak languages other English. Of those that primarily speak other languages and are LEP, 77 percent speak Spanish, nine percent speak “other Indo-European languages”, four percent speak “Russian, Polish or other Slavic languages” and 3.6 percent speak Arabic.

Table 3: PASSAIC COUNTY LANGUAGES

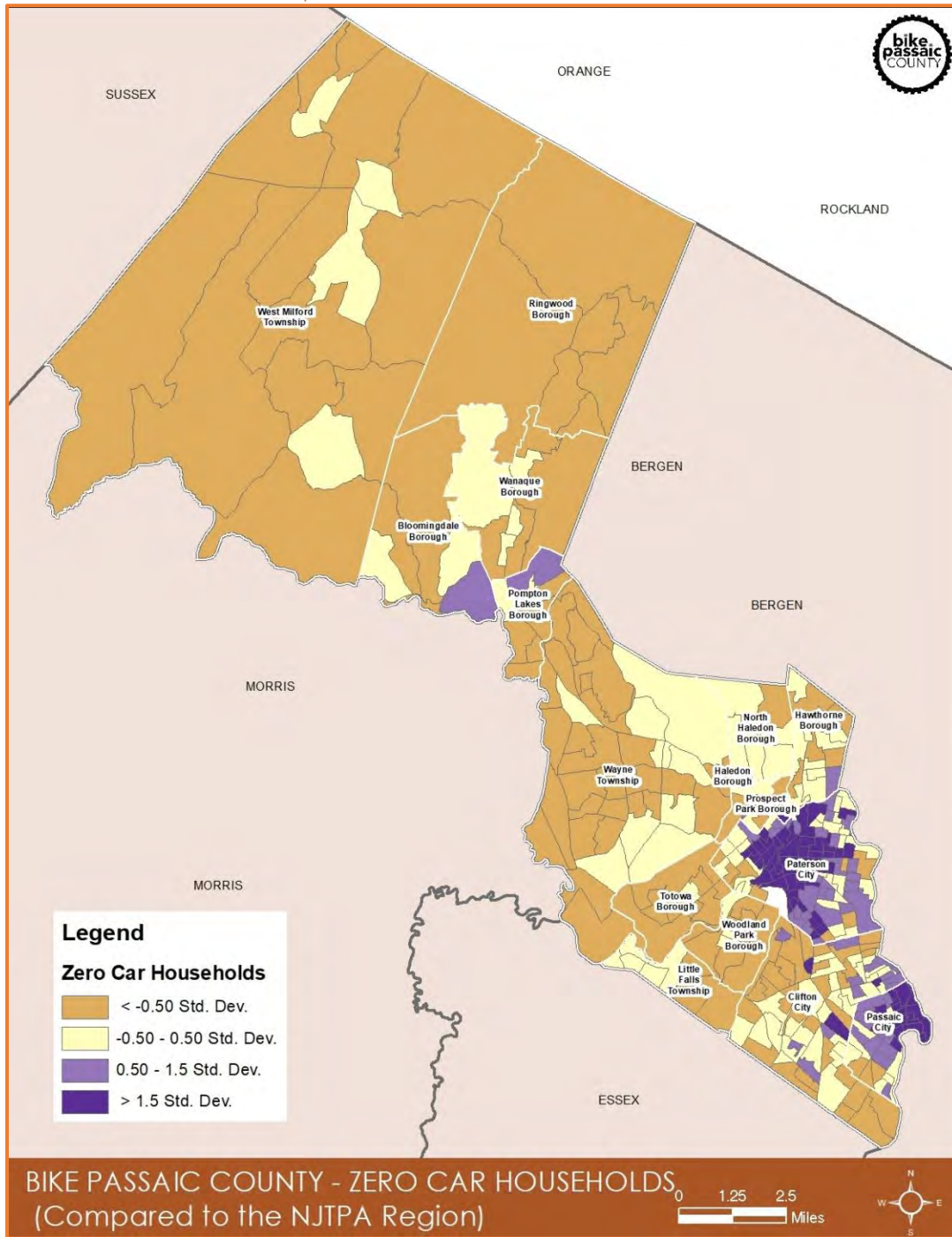
Geographic Area Name	Total Population (5 years and above)	Total LEP (5 years and above)	Spanish	French, Haitian, or Cajun	German or other West Germanic languages	Russian, Polish, or other Slavic languages	Other Indo-European languages	Korean	Chinese (incl. Mandarin, Cantonese)	Vietnamese	Tagalog (incl. Filipino)	Other Asian and Pacific Island languages	Arabic	Other and unspecified languages
Bloomington borough	7621	5.72%	2.7%	0.00 %	0.00 %	0.67 %	0.70 %	0.00 %	0.50 %	0.59 %	0.00 %	0.56 %	0.00 %	0.00 %
Clifton city	80492	21.65 %	13.3 %	0.15 %	0.04 %	2.12 %	2.57 %	0.38 %	0.30 %	0.02 %	0.47 %	0.89 %	1.27 %	0.09 %
Haledon borough	7903	18.69 %	11.6 %	0.38 %	0.00 %	1.68 %	1.92 %	0.00 %	0.00 %	0.00 %	0.00 %	1.16 %	1.61 %	0.34 %
Hawthorne borough	17637	6.51%	4.2%	0.00 %	0.00 %	0.20 %	1.29 %	0.09 %	0.00 %	0.00 %	0.15 %	0.01 %	0.57 %	0.00 %
Little Falls township	13618	6.67%	2.0%	0.15 %	0.32 %	0.51 %	1.68 %	0.16 %	0.00 %	0.05 %	0.00 %	0.68 %	1.06 %	0.00 %
North Haledon borough	8080	4.63%	0.6%	0.00 %	0.00 %	0.16 %	2.43 %	0.00 %	0.00 %	0.00 %	0.00 %	0.17 %	1.05 %	0.19 %
Passaic city	63390	34.82 %	32.9 %	0.00 %	0.00 %	0.81 %	0.84 %	0.00 %	0.00 %	0.00 %	0.08 %	0.02 %	0.03 %	0.13 %
Paterson city	134212	32.58 %	28.0 %	0.18 %	0.00 %	0.20 %	2.41 %	0.00 %	0.07 %	0.01 %	0.00 %	0.47 %	0.94 %	0.26 %
Pompton Lakes borough	10445	10.40 %	7.4%	0.11 %	0.00 %	0.23 %	1.60 %	0.27 %	0.00 %	0.17 %	0.34 %	0.14 %	0.12 %	0.00 %
Prospect Park borough	5321	16.90 %	12.3 %	0.28 %	0.00 %	0.13 %	1.48 %	0.00 %	0.00 %	0.00 %	0.00 %	0.00 %	2.48 %	0.19 %
Ringwood borough	11500	4.30%	1.4%	0.00 %	0.00 %	1.25 %	1.52 %	0.00 %	0.00 %	0.00 %	0.10 %	0.00 %	0.01 %	0.06 %
Totowa borough	10459	9.80%	4.0%	0.00 %	0.26 %	0.78 %	2.43 %	0.95 %	0.46 %	0.00 %	0.11 %	0.00 %	0.85 %	0.00 %
Wanaque borough	11073	3.80%	2.2%	0.00 %	0.00 %	0.13 %	0.84 %	0.00 %	0.06 %	0.00 %	0.56 %	0.00 %	0.00 %	0.00 %
Wayne township	50897	7.03%	2.4%	0.02 %	0.02 %	1.05 %	1.45 %	0.63 %	0.48 %	0.00 %	0.08 %	0.31 %	0.49 %	0.09 %
West Milford township	25032	3.41%	1.6%	0.00 %	0.04 %	0.63 %	0.55 %	0.00 %	0.26 %	0.00 %	0.00 %	0.12 %	0.10 %	0.14 %
Woodland Park borough	11734	14.90 %	4.8%	0.00 %	0.54 %	1.08 %	5.47 %	0.10 %	0.00 %	0.00 %	0.00 %	0.92 %	2.01 %	0.00 %
Passaic County	469414	20.81 %	16.2 %	0.10 %	0.04 %	0.83 %	1.91 %	0.17 %	0.16 %	0.02 %	0.13 %	0.41 %	0.75 %	0.14 %



V. HOUSEHOLDS WITH NO ACCESS TO VEHICLES

Per the 2015-2019 ACS data, 16.6 percent of the County's households have no access to a vehicle. Similar to the other indicators, of the 16 municipalities, Passaic City (33.3 percent) and Paterson City (31.3 percent) both have a higher percentage of zero vehicle households than the County. Map 5 shows the distribution of zero vehicle households by census block groups in Passaic County when compared to the NJTPA regional average (12.3 percent).

Map 5: ZERO VEHICLE HOUSEHOLDS

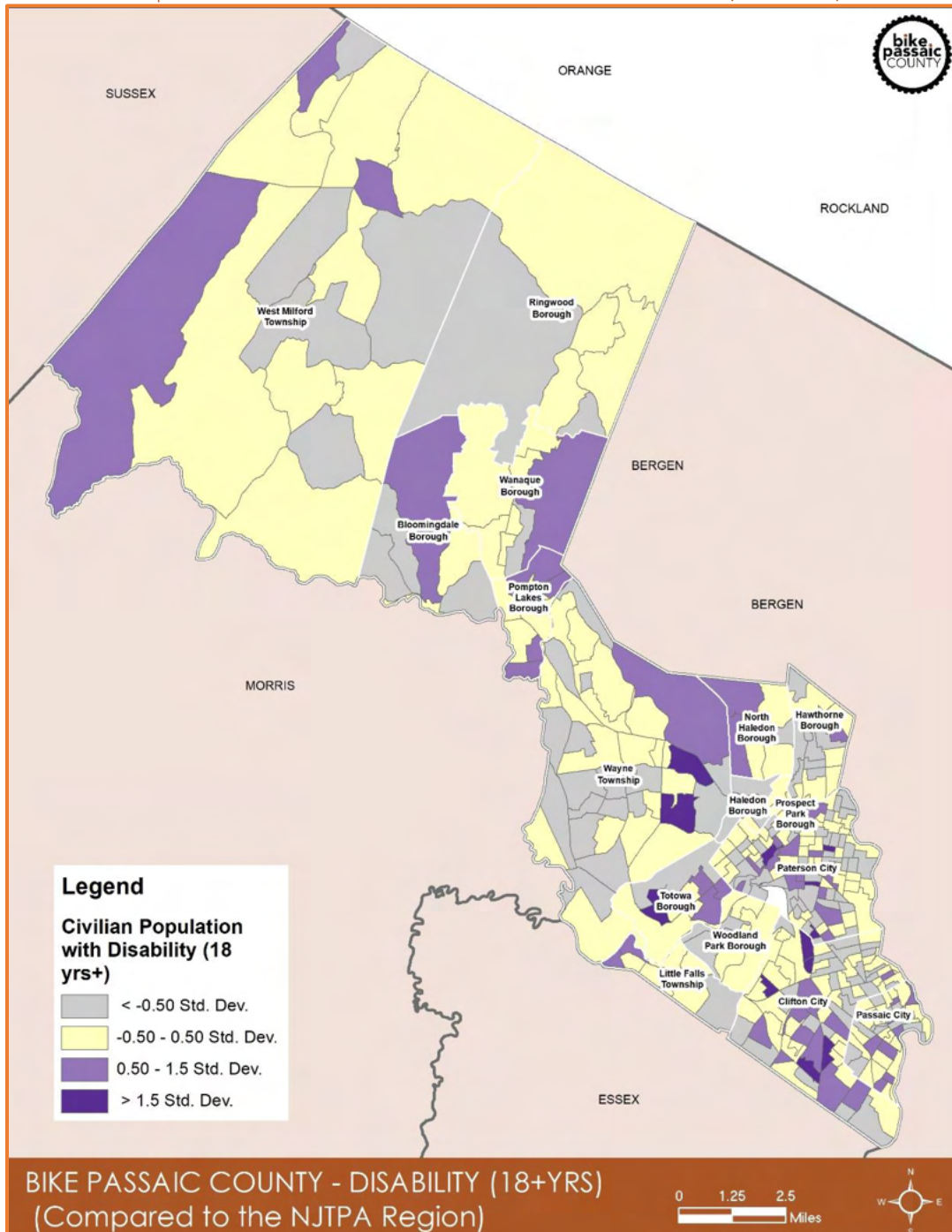




VI. POPULATION WITH A DISABILITY (18 YEARS+)

More than 10 percent of the County's population has a disability as per the data provided by the 2015-2019 ACS. Of the 16 municipalities, 10 municipalities have a higher percentage of population with a disability than the County. Totowa Borough (13.3 percent); Pompton lakes Borough (13.1 percent); and Wanaque Borough (12.7 percent) have the highest percentage of population with a disability. Map 6 shows the distribution of persons with a disability by census block groups in Passaic County when compared to the NJTPA regional average (11.5 percent).

Map 6: CIVILIAN POPULATION WITH A DISABILITY (18YRS +)

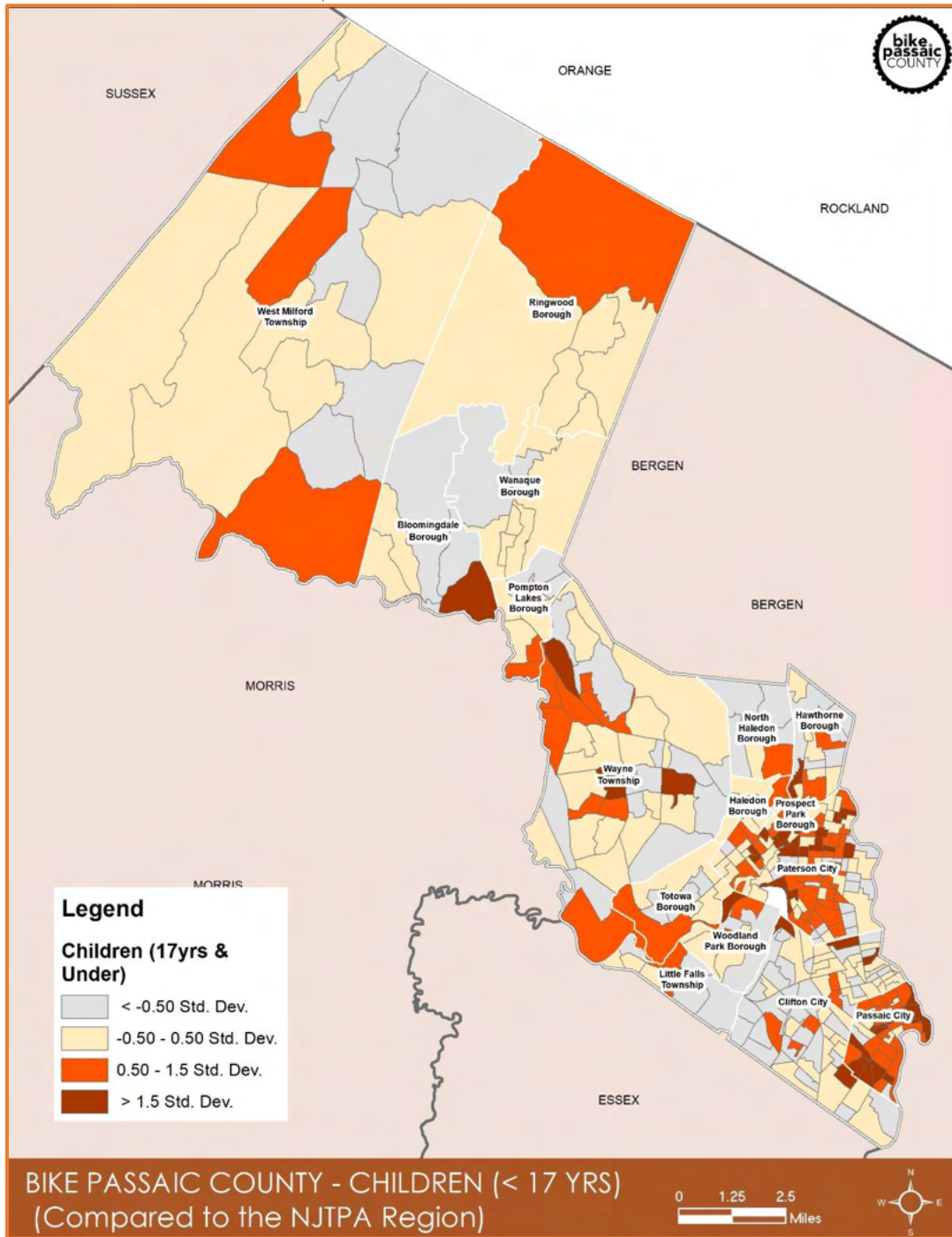




VII. MINOR POPULATION (17 YEARS AND UNDER)

According to the 2015-2019 ACS data, almost 24 percent of the County's population consists of minors, 17 years and under. Passaic City has the highest percentage of minors (32.2 percent), followed by Prospect Park Borough (28.7 percent) and Paterson City (27.3 percent). Map 7 shows the distribution of minors under 17 years by census block groups in Passaic County when compared to the NJTPA regional average (22 percent).

Map 7: MINORS UNDER 17 YEARS

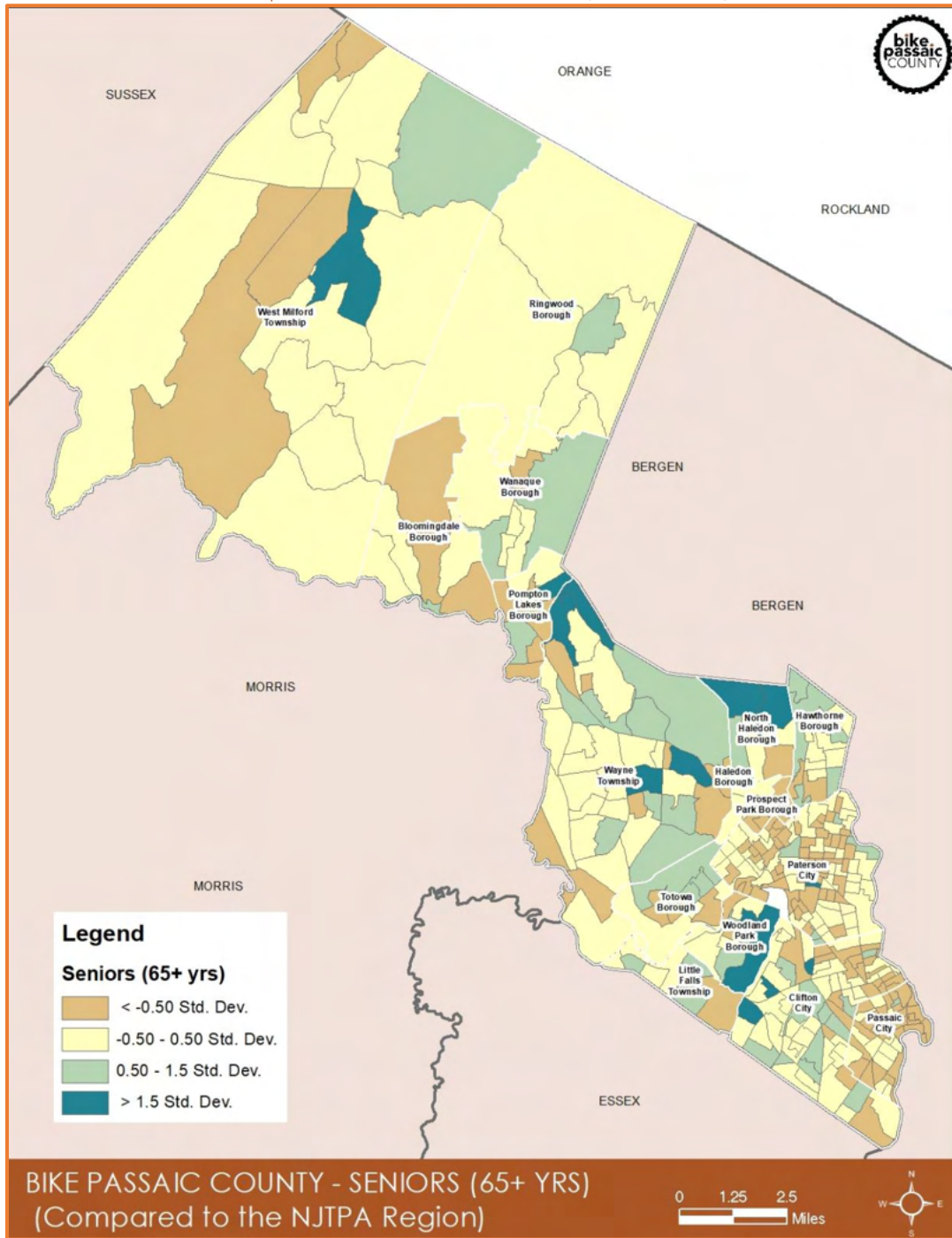




VIII. SENIOR POPULATION (65+ YEARS)

The ACS data shows that approximately 14 percent of the County's population is age 65 or older. North Haledon Borough has the highest percentage of seniors (23.3 percent), followed by Wanaque Borough (21.6 percent) and Woodland Park Borough (20.1 percent). Map 8 shows the distribution of seniors 65 years and over by census block groups in Passaic County when compared to the NJTPA regional average (15.7 percent).

Map 8: SENIOR POPULATION (65+ YEARS)





Appendix B: Composite EJ Score

A final map was created with a composite score of all seven categories. An Environmental Justice score (EJ Score) was determined by standard deviations relative to an indicator's NJTPA regional average.

The data for each indicator was assigned a score based on the following:

- Well-below average: ≤ -1.5 Std.Dev. (score of 0)
- Below average: $-1.5 - -0.5$ Std.Dev. (score of 1)
- Average: $-0.5 - 0.5$ Std. Dev. (score of 2)
- Above average: $0.5 - 1.5$ Std. Dev. (score of 3)
- Well above average: > 1.5 Std. Dev. (score of 4)

The Census block groups with estimates of zero were manually assigned a score of 0 instead of 1. For some of the indicators analyzed, the 5-year estimates at the block group level were found in different sets of tables and have a substantial margin of error.

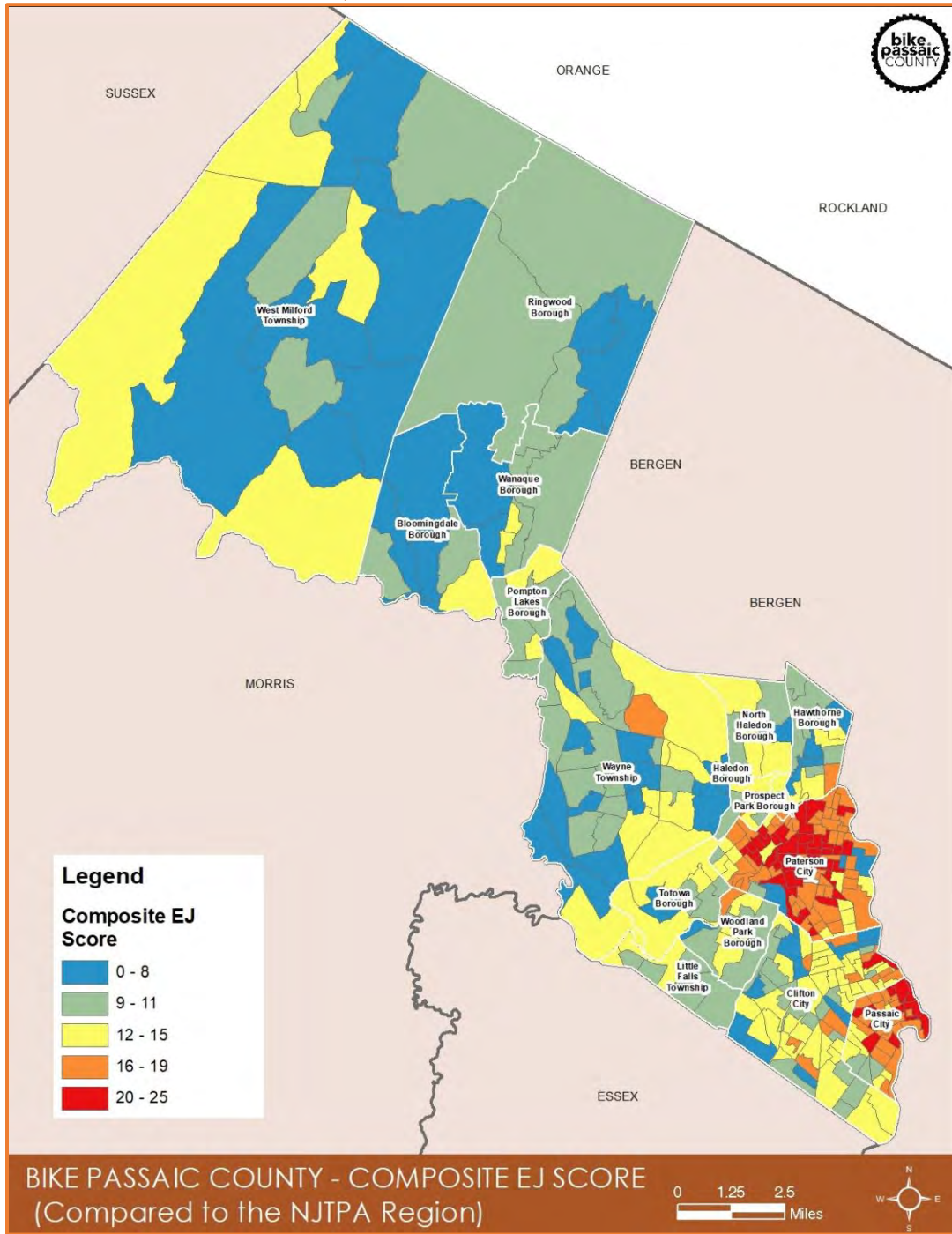
A composite EJ score was developed for each of the Census block groups in the County. All of the individual EJ scores for each of the seven indicators was combined to develop the composite EJ Score. Map 8 shows the composite EJ score for all the census block groups in Passaic County. Paterson City has the highest composite EJ score followed by Passaic City and Clifton City (see Table 3 below).

Table 3: Composite EJ Score by Municipality

MUNICIPALITIES	COMPOSITE EJSCORE
Paterson City	2056
Passaic City	931
Clifton City	644
Wayne Township	352
Woodland Park Borough	189
Little Falls Township	158
Totowa Borough	135
West Milford Township	121
Pompton Lakes Borough	91
Hawthorne Borough	87
Bloomingtondale Borough	79
Wanaque Borough	71
Prospect Park Borough	70
North Haledon Borough	64
Haledon Borough	62
Ringwood Borough	35



Map 9: COMPOSITE EJ SCORE





Appendix C: Indicators of Potential Disadvantage by Census Block Group

(See table beginning on the next page).

BIKE PASSAIC COUNTY



ENVIRONMENT JUSTICE DATA BY INDICATOR¹ BY CENSUS BLOCK GROUP²

Draft 12.1.2021

No.	Municipality Name	Census Tract (CT) No.	Census Block Group (CBG) No.	Percent Minority Population	Percent Low Income HH	Percent Limited English Speaking HH	Percent Zero Car HH	Percent Persons with a Disability	Percent Children 17 yrs & under	Percent Seniors (65+ yrs)
1	Bloomington Borough	CT 1165	CBG 1	20.0%	0.0%	0.0%	5.6%	14.0%	15.3%	18.0%
2	Bloomington Borough	CT 1165	CBG 3	11.0%	0.0%	4.0%	0.0%	13.0%	7.1%	26.0%
3	Bloomington Borough	CT 1165	CBG 4	1.0%	4.8%	0.0%	8.0%	6.0%	26.1%	18.0%
4	Bloomington Borough	CT 1165	CBG 5	0.0%	0.0%	4.0%	0.0%	7.0%	27.5%	14.0%
5	Bloomington Borough	CT 1165	CBG 6	12.0%	1.8%	0.0%	0.0%	16.0%	14.2%	10.0%
6	Bloomington Borough	CT 2167.02	CBG 1	10.0%	0.0%	2.0%	3.4%	5.0%	29.9%	21.0%
7	Bloomington Borough	CT 2366.02	CBG 1	8.0%	0.0%	0.0%	9.7%	9.0%	10.9%	21.0%
8	Bloomington Borough	CT 2568.04	CBG 3	0.0%	4.5%	0.0%	0.0%	11.0%	18.8%	14.0%
9	Bloomington Borough	CT 2568.05	CBG 3	12.0%	3.7%	2.0%	4.0%	8.0%	36.8%	12.0%
10	Clifton City	CT 1242	CBG 2	9.0%	0.0%	5.0%	19.7%	10.0%	18.8%	12.0%
11	Clifton City	CT 1242	CBG 4	13.0%	8.4%	4.0%	0.0%	13.0%	18.2%	26.0%
12	Clifton City	CT 1242	CBG 5	31.0%	7.6%	0.0%	0.0%	14.0%	16.4%	16.0%
13	Clifton City	CT 1243.11	CBG 1	3.0%	0.0%	0.0%	0.0%	23.0%	22.9%	38.0%
14	Clifton City	CT 1243.11	CBG 2	34.0%	5.5%	6.0%	2.6%	6.0%	17.9%	20.0%
15	Clifton City	CT 1243.11	CBG 3	35.0%	10.5%	5.0%	9.4%	11.0%	13.0%	20.0%
16	Clifton City	CT 1243.11	CBG 4	15.0%	2.9%	5.0%	6.1%	9.0%	35.7%	19.0%
17	Clifton City	CT 1243.12	CBG 2	15.0%	8.5%	3.0%	10.0%	15.0%	20.4%	19.0%
18	Clifton City	CT 1243.12	CBG 4	11.0%	0.0%	2.0%	0.0%	0.0%	19.4%	28.0%
19	Clifton City	CT 1243.21	CBG 1	48.0%	6.4%	11.0%	14.1%	21.0%	12.5%	31.0%
20	Clifton City	CT 1243.21	CBG 2	6.0%	0.0%	9.0%	0.0%	17.0%	7.7%	32.0%
21	Clifton City	CT 1243.21	CBG 3	8.0%	0.0%	6.0%	0.0%	2.0%	41.9%	14.0%
22	Clifton City	CT 1243.21	CBG 4	19.0%	4.9%	36.0%	16.0%	15.0%	13.3%	15.0%
23	Clifton City	CT 1243.21	CBG 5	16.0%	11.4%	11.0%	4.9%	10.0%	29.7%	17.0%
24	Clifton City	CT 1243.22	CBG 1	29.0%	6.3%	5.0%	5.1%	16.0%	20.0%	26.0%
25	Clifton City	CT 1243.22	CBG 2	21.0%	1.8%	2.0%	20.7%	26.0%	24.7%	30.0%
26	Clifton City	CT 1243.22	CBG 3	13.0%	0.0%	0.0%	0.0%	11.0%	27.9%	14.0%
27	Clifton City	CT 1243.22	CBG 4	7.0%	2.7%	0.0%	0.0%	7.0%	19.0%	15.0%
28	Clifton City	CT 1243.23	CBG 1	22.0%	11.1%	10.0%	10.5%	10.0%	14.9%	16.0%
29	Clifton City	CT 1243.23	CBG 2	40.0%	12.4%	19.0%	25.8%	12.0%	34.4%	13.0%
30	Clifton City	CT 1243.23	CBG 3	23.0%	4.4%	3.0%	14.9%	16.0%	17.2%	31.0%
31	Clifton City	CT 1244.01	CBG 1	11.0%	17.8%	36.0%	32.6%	6.0%	32.2%	4.0%
32	Clifton City	CT 1244.01	CBG 4	33.0%	9.2%	0.0%	0.0%	30.0%	25.4%	19.0%
33	Clifton City	CT 1244.01	CBG 7	6.0%	13.2%	5.0%	6.8%	17.0%	29.0%	17.0%
34	Clifton City	CT 1244.02	CBG 3	46.0%	16.7%	15.0%	2.4%	7.0%	30.7%	7.0%
35	Clifton City	CT 1244.02	CBG 4	21.0%	5.7%	7.0%	0.0%	6.0%	15.8%	11.0%
36	Clifton City	CT 1245	CBG 1	27.0%	0.0%	0.0%	10.2%	10.0%	33.3%	10.0%
37	Clifton City	CT 1245	CBG 4	0.0%	0.0%	0.0%	10.6%	8.0%	27.1%	24.0%
38	Clifton City	CT 1246.01	CBG 3	49.0%	8.1%	16.0%	5.8%	5.0%	30.6%	9.0%
39	Clifton City	CT 1246.01	CBG 4	3.0%	26.9%	11.0%	64.4%	50.0%	6.8%	74.0%
40	Clifton City	CT 1246.02	CBG 1	20.0%	10.3%	15.0%	2.2%	9.0%	26.0%	12.0%
41	Clifton City	CT 1246.02	CBG 2	26.0%	11.7%	21.0%	13.3%	7.0%	21.7%	15.0%

1: Foreign-Born data is not included as it is only available at the Census Tract level.

2: Green shaded cells highlight census block groups with above average percentage for each indicator.

BIKE PASSAIC COUNTY



ENVIRONMENT JUSTICE DATA BY INDICATOR¹ BY CENSUS BLOCK GROUP²

Draft 12.1.2021

No.	Municipality Name	Census Tract (CT) No.	Census Block Group (CBG) No.	Percent Minority Population	Percent Low Income HH	Percent Limited English Speaking HH	Percent Zero Car HH	Percent Persons with a Disability	Percent Children 17 yrs & under	Percent Seniors (65+ yrs)
42	Clifton City	CT 1246.02	CBG 3	20.0%	2.1%	2.0%	7.3%	6.0%	43.9%	14.0%
43	Clifton City	CT 1246.02	CBG 4	15.0%	5.4%	13.0%	3.3%	10.0%	25.2%	18.0%
44	Clifton City	CT 1247	CBG 3	5.0%	3.6%	3.0%	0.0%	1.0%	24.0%	8.0%
45	Clifton City	CT 1247	CBG 4	24.0%	0.0%	10.0%	0.0%	8.0%	12.1%	23.0%
46	Clifton City	CT 1247	CBG 5	16.0%	43.9%	39.0%	11.6%	10.0%	46.5%	5.0%
47	Clifton City	CT 1247	CBG 6	70.0%	0.0%	1.0%	0.0%	3.0%	18.0%	4.0%
48	Clifton City	CT 1248	CBG 1	13.0%	7.9%	11.0%	3.0%	10.0%	28.1%	18.0%
49	Clifton City	CT 1248	CBG 2	20.0%	2.1%	11.0%	2.1%	10.0%	32.1%	11.0%
50	Clifton City	CT 1248	CBG 3	21.0%	13.7%	26.0%	12.2%	13.0%	26.1%	10.0%
51	Clifton City	CT 1248	CBG 4	27.0%	6.5%	15.0%	5.9%	7.0%	28.1%	10.0%
52	Clifton City	CT 1248	CBG 5	17.0%	26.9%	21.0%	24.7%	2.0%	11.0%	19.0%
53	Clifton City	CT 1249	CBG 2	19.0%	8.1%	10.0%	24.2%	13.0%	19.1%	11.0%
54	Clifton City	CT 1250	CBG 1	42.0%	44.8%	27.0%	29.3%	12.0%	28.7%	14.0%
55	Clifton City	CT 1250	CBG 2	60.0%	8.1%	9.0%	6.2%	8.0%	27.0%	10.0%
56	Clifton City	CT 1250	CBG 3	8.0%	1.8%	31.0%	8.0%	13.0%	17.6%	16.0%
57	Clifton City	CT 1250	CBG 4	50.0%	0.0%	17.0%	17.1%	7.0%	13.2%	12.0%
58	Clifton City	CT 1250	CBG 5	22.0%	19.7%	12.0%	60.1%	13.0%	25.9%	7.0%
59	Clifton City	CT 1251	CBG 1	12.0%	25.8%	17.0%	25.5%	18.0%	28.9%	10.0%
60	Haledon Borough	CT 1337.01	CBG 1	2.0%	19.8%	14.0%	12.2%	11.0%	11.9%	21.0%
61	Haledon Borough	CT 1337.01	CBG 4	53.0%	0.0%	15.0%	23.7%	10.0%	35.7%	14.0%
62	Haledon Borough	CT 1635	CBG 4	18.0%	9.3%	4.0%	13.2%	8.0%	27.4%	21.0%
63	Haledon Borough	CT 1635	CBG 5	7.0%	0.0%	5.0%	16.8%	19.0%	13.0%	30.0%
64	Haledon Borough	CT 2460.01	CBG 3	58.0%	0.0%	0.0%	0.0%	5.0%	1.8%	4.0%
65	Haledon Borough	CT 2461.01	CBG 4	5.0%	0.0%	3.0%	0.0%	7.0%	16.6%	11.0%
66	Hawthorne Borough	CT 1432	CBG 3	14.0%	2.1%	3.0%	0.0%	11.0%	14.4%	13.0%
67	Hawthorne Borough	CT 1432	CBG 4	5.0%	0.0%	4.0%	6.7%	7.0%	24.5%	17.0%
68	Hawthorne Borough	CT 1432	CBG 5	3.0%	0.0%	0.0%	0.0%	3.0%	28.3%	16.0%
69	Hawthorne Borough	CT 1432	CBG 6	1.0%	0.0%	0.0%	4.6%	5.0%	16.5%	11.0%
70	Hawthorne Borough	CT 1433	CBG 1	12.0%	0.0%	0.0%	9.4%	12.0%	17.1%	17.0%
71	Hawthorne Borough	CT 1433	CBG 2	11.0%	19.8%	8.0%	11.4%	8.0%	35.4%	17.0%
72	Hawthorne Borough	CT 1433	CBG 3	19.0%	6.8%	0.0%	13.6%	19.0%	18.1%	24.0%
73	Hawthorne Borough	CT 1433	CBG 4	24.0%	4.9%	0.0%	2.5%	11.0%	19.8%	13.0%
74	Hawthorne Borough	CT 1434	CBG 4	0.0%	9.6%	3.0%	9.6%	2.0%	23.8%	11.0%
75	Little Falls Township	CT 1243.11	CBG 5	8.0%	0.0%	2.0%	0.0%	14.0%	13.0%	20.0%
76	Little Falls Township	CT 1243.12	CBG 1	12.0%	4.0%	2.0%	3.4%	9.0%	16.5%	34.0%
77	Little Falls Township	CT 1243.12	CBG 3	25.0%	0.0%	0.0%	5.2%	7.0%	7.4%	13.0%
78	Little Falls Township	CT 1540.01	CBG 1	54.0%	3.5%	2.0%	3.0%	7.0%	19.6%	10.0%
79	Little Falls Township	CT 1540.01	CBG 2	13.0%	4.1%	4.0%	2.8%	9.0%	13.9%	28.0%
80	Little Falls Township	CT 1540.02	CBG 1	0.0%	9.8%	6.0%	5.6%	19.0%	23.9%	13.0%
81	Little Falls Township	CT 1540.02	CBG 2	6.0%	13.0%	0.0%	11.0%	10.0%	37.4%	17.0%
82	Little Falls Township	CT 1540.02	CBG 3	10.0%	8.8%	11.0%	15.2%	17.0%	2.5%	21.0%

1: Foreign-Born data is not included as it is only available at the Census Tract level.

2: Green shaded cells highlight census block groups with above average percentage for each indicator.

BIKE PASSAIC COUNTY



ENVIRONMENT JUSTICE DATA BY INDICATOR¹ BY CENSUS BLOCK GROUP²

Draft 12.1.2021

No.	Municipality Name	Census Tract (CT) No.	Census Block Group (CBG) No.	Percent Minority Population	Percent Low Income HH	Percent Limited English Speaking HH	Percent Zero Car HH	Percent Persons with a Disability	Percent Children 17 yrs & under	Percent Seniors (65+ yrs)
83	Little Falls Township	CT 1540.02	CBG 4	29.0%	0.0%	0.0%	11.5%	8.0%	28.6%	13.0%
84	Little Falls Township	CT 1540.02	CBG 5	0.0%	0.0%	4.0%	6.3%	10.0%	21.4%	29.0%
85	Little Falls Township	CT 2238.02	CBG 2	17.0%	0.0%	18.0%	0.0%	13.0%	35.0%	20.0%
86	Little Falls Township	CT 2463	CBG 3	6.0%	18.0%	5.0%	3.8%	10.0%	38.0%	13.0%
87	Little Falls Township	CT 2641.02	CBG 1	9.0%	3.6%	9.0%	0.0%	11.0%	12.4%	52.0%
88	Little Falls Township	CT 2641.02	CBG 2	14.0%	0.0%	0.0%	0.0%	7.0%	24.9%	20.0%
89	Little Falls Township	CT 2641.02	CBG 5	18.0%	4.2%	10.0%	1.8%	7.0%	25.3%	19.0%
90	North Haledon Borough	CT 1432	CBG 1	3.0%	5.1%	0.0%	5.1%	8.0%	24.1%	23.0%
91	North Haledon Borough	CT 1432	CBG 2	4.0%	6.4%	0.0%	0.0%	13.0%	16.4%	30.0%
92	North Haledon Borough	CT 1635	CBG 1	2.0%	2.1%	0.0%	2.1%	15.0%	16.9%	40.0%
93	North Haledon Borough	CT 1635	CBG 2	0.0%	0.0%	10.0%	7.2%	4.0%	12.6%	17.0%
94	North Haledon Borough	CT 1635	CBG 6	2.0%	0.0%	4.0%	11.4%	20.0%	15.0%	36.0%
95	North Haledon Borough	CT 2460.01	CBG 2	23.0%	0.8%	7.0%	7.5%	15.0%	21.6%	23.0%
96	Passaic City	CT 1244.01	CBG 2	21.0%	0.0%	8.0%	4.4%	10.0%	24.0%	12.0%
97	Passaic City	CT 1244.01	CBG 3	4.0%	8.1%	5.0%	5.2%	9.0%	24.9%	16.0%
98	Passaic City	CT 1244.01	CBG 5	20.0%	11.7%	5.0%	5.6%	14.0%	12.3%	14.0%
99	Passaic City	CT 1244.01	CBG 6	0.0%	9.8%	0.0%	0.0%	9.0%	60.8%	9.0%
100	Passaic City	CT 1244.02	CBG 1	10.0%	0.0%	0.0%	0.0%	16.0%	30.2%	24.0%
101	Passaic City	CT 1244.02	CBG 2	38.0%	3.3%	20.0%	0.0%	10.0%	19.5%	20.0%
102	Passaic City	CT 1245	CBG 2	47.0%	3.5%	20.0%	7.5%	7.0%	10.3%	28.0%
103	Passaic City	CT 1245	CBG 3	20.0%	14.8%	0.0%	0.0%	5.0%	26.0%	0.0%
104	Passaic City	CT 1245	CBG 5	34.0%	18.4%	17.0%	36.1%	21.0%	16.5%	32.0%
105	Passaic City	CT 1249	CBG 1	51.0%	6.9%	13.0%	5.1%	8.0%	24.7%	19.0%
106	Passaic City	CT 1249	CBG 3	92.0%	11.0%	12.0%	14.0%	4.0%	31.8%	7.0%
107	Passaic City	CT 1250	CBG 6	23.0%	11.9%	17.0%	18.6%	14.0%	32.0%	8.0%
108	Passaic City	CT 1251	CBG 2	43.0%	22.8%	20.0%	28.4%	12.0%	24.7%	10.0%
109	Passaic City	CT 1251	CBG 3	30.0%	15.0%	19.0%	30.1%	7.0%	27.4%	3.0%
110	Passaic City	CT 1752	CBG 1	36.0%	34.1%	37.0%	44.3%	16.0%	50.0%	2.0%
111	Passaic City	CT 1752	CBG 2	55.0%	36.8%	38.0%	58.6%	13.0%	59.3%	7.0%
112	Passaic City	CT 1752	CBG 3	27.0%	49.6%	58.0%	66.2%	0.0%	49.2%	2.0%
113	Passaic City	CT 1753.01	CBG 1	21.0%	58.4%	47.0%	66.7%	7.0%	53.0%	1.0%
114	Passaic City	CT 1753.01	CBG 2	43.0%	25.7%	27.0%	45.3%	7.0%	32.9%	6.0%
115	Passaic City	CT 1753.02	CBG 1	57.0%	51.9%	40.0%	42.6%	13.0%	43.7%	5.0%
116	Passaic City	CT 1753.02	CBG 2	8.0%	0.0%	28.0%	41.3%	18.0%	24.3%	26.0%
117	Passaic City	CT 1753.02	CBG 3	51.0%	34.4%	29.0%	36.4%	9.0%	37.2%	4.0%
118	Passaic City	CT 1754.01	CBG 1	28.0%	18.5%	22.0%	41.3%	9.0%	37.7%	7.0%
119	Passaic City	CT 1754.01	CBG 2	40.0%	31.2%	49.0%	29.5%	13.0%	33.0%	9.0%
120	Passaic City	CT 1754.01	CBG 3	56.0%	33.9%	26.0%	31.5%	7.0%	38.4%	12.0%
121	Passaic City	CT 1754.02	CBG 1	20.0%	50.7%	29.0%	44.0%	3.0%	43.6%	4.0%
122	Passaic City	CT 1754.02	CBG 2	52.0%	46.2%	12.0%	52.0%	22.0%	32.1%	8.0%
123	Passaic City	CT 1754.02	CBG 3	21.0%	48.2%	54.0%	69.6%	19.0%	74.1%	12.0%

1: Foreign-Born data is not included as it is only available at the Census Tract level.

2: Green shaded cells highlight census block groups with above average percentage for each indicator.

BIKE PASSAIC COUNTY



ENVIRONMENT JUSTICE DATA BY INDICATOR¹ BY CENSUS BLOCK GROUP²

Draft 12.1.2021

No.	Municipality Name	Census Tract (CT) No.	Census Block Group (CBG) No.	Percent Minority Population	Percent Low Income HH	Percent Limited English Speaking HH	Percent Zero Car HH	Percent Persons with a Disability	Percent Children 17 yrs & under	Percent Seniors (65+ yrs)
124	Passaic City	CT 1754.02	CBG 4	26.0%	5.3%	39.0%	11.4%	7.0%	32.4%	11.0%
125	Passaic City	CT 1755	CBG 1	60.0%	29.7%	7.0%	25.7%	8.0%	32.8%	6.0%
126	Passaic City	CT 1755	CBG 2	66.0%	22.2%	33.0%	34.0%	9.0%	38.2%	6.0%
127	Passaic City	CT 1755	CBG 3	73.0%	26.3%	33.0%	28.4%	10.0%	30.8%	14.0%
128	Passaic City	CT 1756.01	CBG 1	2.0%	2.5%	0.0%	4.1%	7.0%	54.3%	10.0%
129	Passaic City	CT 1756.01	CBG 2	5.0%	6.3%	0.0%	0.0%	8.0%	52.9%	6.0%
130	Passaic City	CT 1756.02	CBG 1	116.0%	19.6%	20.0%	10.1%	1.0%	32.3%	10.0%
131	Passaic City	CT 1756.02	CBG 2	43.0%	13.7%	0.0%	32.2%	13.0%	17.4%	13.0%
132	Passaic City	CT 1756.02	CBG 3	49.0%	35.9%	3.0%	14.3%	8.0%	61.4%	10.0%
133	Passaic City	CT 1756.02	CBG 4	47.0%	12.7%	5.0%	17.4%	7.0%	41.9%	17.0%
134	Passaic City	CT 1757.01	CBG 1	28.0%	25.9%	30.0%	9.4%	10.0%	38.7%	5.0%
135	Passaic City	CT 1757.01	CBG 2	20.0%	0.0%	18.0%	12.2%	17.0%	54.6%	7.0%
136	Passaic City	CT 1757.01	CBG 3	36.0%	13.2%	8.0%	16.2%	18.0%	33.7%	11.0%
137	Passaic City	CT 1757.01	CBG 4	24.0%	19.2%	15.0%	33.7%	13.0%	17.9%	21.0%
138	Passaic City	CT 1757.03	CBG 1	43.0%	25.2%	31.0%	34.2%	16.0%	35.4%	19.0%
139	Passaic City	CT 1757.03	CBG 2	41.0%	17.0%	16.0%	20.7%	20.0%	39.1%	15.0%
140	Passaic City	CT 1757.04	CBG 1	5.0%	4.5%	0.0%	0.0%	15.0%	52.0%	8.0%
141	Passaic City	CT 1757.04	CBG 2	38.0%	25.1%	33.0%	22.9%	12.0%	33.9%	12.0%
142	Passaic City	CT 1758.01	CBG 1	27.0%	25.7%	43.0%	49.2%	12.0%	38.2%	12.0%
143	Passaic City	CT 1758.01	CBG 2	63.0%	47.0%	25.0%	29.2%	12.0%	32.9%	6.0%
144	Passaic City	CT 1758.01	CBG 3	18.0%	22.9%	25.0%	25.9%	13.0%	31.8%	18.0%
145	Passaic City	CT 1758.02	CBG 1	48.0%	50.3%	37.0%	44.4%	8.0%	52.1%	3.0%
146	Passaic City	CT 1758.02	CBG 2	28.0%	56.0%	36.0%	54.9%	8.0%	34.2%	5.0%
147	Passaic City	CT 1758.02	CBG 3	41.0%	26.7%	47.0%	31.7%	7.0%	48.0%	7.0%
148	Passaic City	CT 1758.02	CBG 4	45.0%	41.7%	36.0%	56.9%	4.0%	38.6%	6.0%
149	Passaic City	CT 1759	CBG 1	44.0%	36.3%	19.0%	39.7%	11.0%	73.0%	8.0%
150	Passaic City	CT 1759	CBG 2	47.0%	56.0%	21.0%	43.6%	9.0%	70.1%	6.0%
151	Passaic City	CT 1759	CBG 3	43.0%	70.5%	31.0%	37.8%	3.0%	43.6%	3.0%
152	Paterson City	CT 1242	CBG 3	11.0%	0.0%	0.0%	0.0%	9.0%	32.1%	9.0%
153	Paterson City	CT 1246.01	CBG 1	12.0%	9.9%	10.0%	0.0%	24.0%	22.5%	13.0%
154	Paterson City	CT 1246.01	CBG 2	69.0%	23.0%	11.0%	3.9%	9.0%	26.7%	9.0%
155	Paterson City	CT 1247	CBG 1	22.0%	27.1%	22.0%	21.9%	6.0%	50.5%	20.0%
156	Paterson City	CT 1247	CBG 2	7.0%	0.0%	0.0%	0.0%	9.0%	20.4%	18.0%
157	Paterson City	CT 1337.01	CBG 2	23.0%	15.3%	9.0%	0.0%	7.0%	32.5%	7.0%
158	Paterson City	CT 1337.01	CBG 3	22.0%	0.0%	8.0%	5.6%	14.0%	27.1%	9.0%
159	Paterson City	CT 1337.01	CBG 5	13.0%	37.9%	0.0%	15.2%	10.0%	20.8%	1.0%
160	Paterson City	CT 1434	CBG 1	26.0%	9.5%	3.0%	22.1%	11.0%	30.8%	23.0%
161	Paterson City	CT 1434	CBG 2	11.0%	11.0%	7.0%	13.2%	13.0%	23.5%	26.0%
162	Paterson City	CT 1434	CBG 5	13.0%	7.2%	2.0%	7.2%	15.0%	36.5%	4.0%
163	Paterson City	CT 1801	CBG 2	36.0%	11.1%	10.0%	9.5%	4.0%	26.3%	14.0%
164	Paterson City	CT 1801	CBG 4	59.0%	18.4%	15.0%	1.0%	11.0%	30.1%	9.0%

1: Foreign-Born data is not included as it is only available at the Census Tract level.

2: Green shaded cells highlight census block groups with above average percentage for each indicator.



ENVIRONMENT JUSTICE DATA BY INDICATOR¹ BY CENSUS BLOCK GROUP²

Draft 12.1.2021

No.	Municipality Name	Census Tract (CT) No.	Census Block Group (CBG) No.	Percent Minority Population	Percent Low Income HH	Percent Limited English Speaking HH	Percent Zero Car HH	Percent Persons with a Disability	Percent Children 17 yrs & under	Percent Seniors (65+ yrs)
165	Paterson City	CT 1801	CBG 5	64.0%	0.0%	23.0%	17.7%	8.0%	26.3%	22.0%
166	Paterson City	CT 1802.01	CBG 2	41.0%	35.6%	12.0%	16.9%	6.0%	32.8%	1.0%
167	Paterson City	CT 1802.02	CBG 1	60.0%	46.0%	30.0%	67.1%	9.0%	62.3%	5.0%
168	Paterson City	CT 1802.02	CBG 2	108.0%	26.9%	26.0%	35.6%	15.0%	56.3%	6.0%
169	Paterson City	CT 1802.02	CBG 3	60.0%	26.9%	30.0%	12.8%	15.0%	21.4%	16.0%
170	Paterson City	CT 1802.02	CBG 4	61.0%	17.8%	33.0%	43.2%	8.0%	25.4%	13.0%
171	Paterson City	CT 1802.02	CBG 5	52.0%	43.9%	37.0%	39.2%	2.0%	43.5%	13.0%
172	Paterson City	CT 1803	CBG 1	33.0%	27.1%	15.0%	32.1%	12.0%	41.4%	13.0%
173	Paterson City	CT 1803	CBG 2	118.0%	33.3%	35.0%	41.1%	3.0%	40.6%	9.0%
174	Paterson City	CT 1803	CBG 3	22.0%	46.3%	34.0%	54.6%	9.0%	68.7%	14.0%
175	Paterson City	CT 1803	CBG 4	52.0%	50.6%	30.0%	35.9%	13.0%	21.8%	16.0%
176	Paterson City	CT 1806	CBG 1	77.0%	17.7%	23.0%	23.7%	7.0%	40.6%	10.0%
177	Paterson City	CT 1806	CBG 2	51.0%	25.1%	8.0%	33.6%	11.0%	42.8%	6.0%
178	Paterson City	CT 1806	CBG 3	50.0%	13.9%	25.0%	15.0%	6.0%	30.1%	4.0%
179	Paterson City	CT 1807	CBG 1	32.0%	26.3%	12.0%	23.9%	2.0%	45.3%	4.0%
180	Paterson City	CT 1807	CBG 2	43.0%	32.1%	11.0%	40.1%	8.0%	27.6%	11.0%
181	Paterson City	CT 1807	CBG 3	28.0%	20.3%	10.0%	21.0%	13.0%	38.6%	16.0%
182	Paterson City	CT 1808	CBG 1	68.0%	25.8%	15.0%	23.5%	8.0%	62.7%	7.0%
183	Paterson City	CT 1808	CBG 2	106.0%	39.9%	20.0%	48.9%	15.0%	35.7%	19.0%
184	Paterson City	CT 1809	CBG 1	16.0%	33.0%	44.0%	53.9%	19.0%	28.8%	17.0%
185	Paterson City	CT 1809	CBG 2	21.0%	55.5%	34.0%	14.3%	12.0%	43.5%	6.0%
186	Paterson City	CT 1809	CBG 3	98.0%	26.0%	17.0%	15.2%	9.0%	39.0%	8.0%
187	Paterson City	CT 1810	CBG 1	14.0%	16.6%	24.0%	10.9%	6.0%	34.1%	21.0%
188	Paterson City	CT 1810	CBG 2	62.0%	20.6%	35.0%	30.9%	8.0%	29.6%	19.0%
189	Paterson City	CT 1810	CBG 3	45.0%	24.3%	23.0%	37.3%	3.0%	46.0%	15.0%
190	Paterson City	CT 1810	CBG 4	55.0%	20.7%	42.0%	11.2%	5.0%	29.7%	6.0%
191	Paterson City	CT 1811	CBG 1	59.0%	51.1%	11.0%	21.0%	9.0%	26.7%	15.0%
192	Paterson City	CT 1811	CBG 2	86.0%	15.6%	51.0%	8.7%	8.0%	43.4%	9.0%
193	Paterson City	CT 1811	CBG 3	94.0%	21.0%	26.0%	10.2%	14.0%	30.4%	15.0%
194	Paterson City	CT 1811	CBG 4	11.0%	23.9%	13.0%	8.5%	15.0%	56.5%	22.0%
195	Paterson City	CT 1811	CBG 5	32.0%	12.7%	34.0%	22.1%	8.0%	30.9%	5.0%
196	Paterson City	CT 1812	CBG 1	105.0%	18.2%	16.0%	17.4%	4.0%	33.1%	6.0%
197	Paterson City	CT 1812	CBG 2	89.0%	20.6%	22.0%	26.0%	8.0%	41.2%	11.0%
198	Paterson City	CT 1812	CBG 3	87.0%	26.2%	24.0%	39.2%	5.0%	38.8%	6.0%
199	Paterson City	CT 1813	CBG 1	125.0%	22.5%	23.0%	37.1%	9.0%	37.0%	17.0%
200	Paterson City	CT 1813	CBG 2	86.0%	18.1%	31.0%	25.8%	4.0%	20.2%	9.0%
201	Paterson City	CT 1813	CBG 3	73.0%	36.3%	17.0%	38.4%	4.0%	44.2%	1.0%
202	Paterson City	CT 1813	CBG 4	42.0%	47.5%	14.0%	44.6%	25.0%	50.7%	13.0%
203	Paterson City	CT 1814	CBG 1	101.0%	37.6%	29.0%	52.0%	16.0%	43.3%	8.0%
204	Paterson City	CT 1814	CBG 2	90.0%	41.0%	21.0%	64.1%	12.0%	48.4%	14.0%
205	Paterson City	CT 1815	CBG 1	84.0%	33.6%	19.0%	37.2%	9.0%	32.1%	9.0%

1: Foreign-Born data is not included as it is only available at the Census Tract level.

2: Green shaded cells highlight census block groups with above average percentage for each indicator.



ENVIRONMENT JUSTICE DATA BY INDICATOR¹ BY CENSUS BLOCK GROUP²

Draft 12.1.2021

No.	Municipality Name	Census Tract (CT) No.	Census Block Group (CBG) No.	Percent Minority Population	Percent Low Income HH	Percent Limited English Speaking HH	Percent Zero Car HH	Percent Persons with a Disability	Percent Children 17 yrs & under	Percent Seniors (65+ yrs)
206	Paterson City	CT 1815	CBG 2	87.0%	56.6%	4.0%	66.5%	12.0%	54.2%	3.0%
207	Paterson City	CT 1817.02	CBG 1	52.0%	39.0%	32.0%	54.2%	5.0%	27.1%	4.0%
208	Paterson City	CT 1817.02	CBG 2	99.0%	33.8%	30.0%	51.6%	3.0%	24.2%	7.0%
209	Paterson City	CT 1818	CBG 1	23.0%	44.3%	36.0%	66.5%	22.0%	29.3%	19.0%
210	Paterson City	CT 1818	CBG 2	38.0%	40.6%	33.0%	69.2%	5.0%	40.4%	7.0%
211	Paterson City	CT 1818	CBG 3	39.0%	32.8%	40.0%	44.0%	12.0%	8.1%	3.0%
212	Paterson City	CT 1819	CBG 1	71.0%	12.5%	15.0%	37.3%	3.0%	31.4%	13.0%
213	Paterson City	CT 1820	CBG 1	84.0%	37.6%	25.0%	51.1%	6.0%	64.1%	7.0%
214	Paterson City	CT 1821	CBG 1	93.0%	28.2%	21.0%	30.0%	13.0%	35.3%	14.0%
215	Paterson City	CT 1821	CBG 2	58.0%	27.1%	6.0%	28.3%	6.0%	32.2%	8.0%
216	Paterson City	CT 1821	CBG 3	34.0%	24.6%	26.0%	24.6%	15.0%	39.6%	13.0%
217	Paterson City	CT 1822	CBG 1	66.0%	48.3%	25.0%	67.0%	17.0%	38.2%	4.0%
218	Paterson City	CT 1822	CBG 2	99.0%	39.4%	30.0%	38.9%	16.0%	39.0%	11.0%
219	Paterson City	CT 1823.01	CBG 1	82.0%	17.2%	20.0%	28.8%	3.0%	39.7%	6.0%
220	Paterson City	CT 1823.02	CBG 1	62.0%	28.9%	12.0%	57.4%	11.0%	30.4%	10.0%
221	Paterson City	CT 1823.02	CBG 2	140.0%	31.6%	47.0%	45.2%	4.0%	38.7%	8.0%
222	Paterson City	CT 1823.02	CBG 3	63.0%	19.9%	16.0%	11.0%	9.0%	42.1%	10.0%
223	Paterson City	CT 1823.02	CBG 4	73.0%	56.8%	42.0%	53.3%	12.0%	35.5%	10.0%
224	Paterson City	CT 1824	CBG 1	71.0%	22.9%	28.0%	29.9%	10.0%	34.9%	14.0%
225	Paterson City	CT 1824	CBG 2	23.0%	19.2%	0.0%	13.8%	11.0%	26.1%	9.0%
226	Paterson City	CT 1824	CBG 3	99.0%	28.5%	24.0%	13.4%	16.0%	43.7%	15.0%
227	Paterson City	CT 1824	CBG 4	48.0%	38.0%	23.0%	40.4%	8.0%	26.8%	12.0%
228	Paterson City	CT 1825	CBG 1	115.0%	9.0%	12.0%	9.2%	11.0%	11.6%	28.0%
229	Paterson City	CT 1825	CBG 2	11.0%	0.0%	11.0%	0.0%	0.0%	23.3%	15.0%
230	Paterson City	CT 1825	CBG 3	54.0%	14.7%	37.0%	23.8%	5.0%	22.2%	17.0%
231	Paterson City	CT 1825	CBG 4	28.0%	0.0%	0.0%	0.0%	4.0%	19.8%	5.0%
232	Paterson City	CT 1825	CBG 5	136.0%	40.4%	11.0%	56.9%	5.0%	57.1%	4.0%
233	Paterson City	CT 1826	CBG 1	41.0%	0.0%	11.0%	4.9%	10.0%	18.2%	12.0%
234	Paterson City	CT 1826	CBG 2	72.0%	8.4%	7.0%	21.2%	13.0%	18.4%	11.0%
235	Paterson City	CT 1826	CBG 3	94.0%	17.8%	8.0%	20.4%	15.0%	32.6%	15.0%
236	Paterson City	CT 1826	CBG 4	81.0%	20.6%	19.0%	24.5%	13.0%	18.0%	17.0%
237	Paterson City	CT 1827	CBG 1	73.0%	17.2%	32.0%	21.4%	9.0%	33.2%	12.0%
238	Paterson City	CT 1827	CBG 2	74.0%	30.7%	33.0%	15.0%	7.0%	36.7%	10.0%
239	Paterson City	CT 1827	CBG 3	105.0%	34.5%	21.0%	25.9%	2.0%	33.7%	5.0%
240	Paterson City	CT 1827	CBG 4	73.0%	28.3%	30.0%	31.8%	16.0%	23.5%	11.0%
241	Paterson City	CT 1828	CBG 1	76.0%	48.4%	49.0%	48.9%	23.0%	20.1%	44.0%
242	Paterson City	CT 1828	CBG 2	112.0%	22.6%	32.0%	32.6%	6.0%	39.0%	7.0%
243	Paterson City	CT 1829	CBG 1	56.0%	37.6%	13.0%	43.2%	8.0%	22.5%	5.0%
244	Paterson City	CT 1829	CBG 2	47.0%	31.3%	46.0%	50.7%	7.0%	52.3%	5.0%
245	Paterson City	CT 1830	CBG 1	38.0%	15.8%	21.0%	40.4%	7.0%	35.8%	11.0%
246	Paterson City	CT 1830	CBG 2	10.0%	32.6%	40.0%	40.9%	14.0%	15.2%	16.0%

1: Foreign-Born data is not included as it is only available at the Census Tract level.

2: Green shaded cells highlight census block groups with above average percentage for each indicator.

BIKE PASSAIC COUNTY



ENVIRONMENT JUSTICE DATA BY INDICATOR¹ BY CENSUS BLOCK GROUP²

Draft 12.1.2021

No.	Municipality Name	Census Tract (CT) No.	Census Block Group (CBG) No.	Percent Minority Population	Percent Low Income HH	Percent Limited English Speaking HH	Percent Zero Car HH	Percent Persons with a Disability	Percent Children 17 yrs & under	Percent Seniors (65+ yrs)
247	Paterson City	CT 1830	CBG 3	29.0%	15.1%	0.0%	0.0%	16.0%	29.2%	18.0%
248	Paterson City	CT 1830	CBG 4	10.0%	61.1%	36.0%	20.0%	7.0%	12.7%	26.0%
249	Paterson City	CT 1830	CBG 5	41.0%	49.2%	55.0%	35.1%	25.0%	20.9%	28.0%
250	Paterson City	CT 1830	CBG 6	57.0%	41.5%	22.0%	25.5%	0.0%	33.8%	5.0%
251	Paterson City	CT 1831.01	CBG 1	44.0%	20.4%	13.0%	17.1%	7.0%	17.1%	15.0%
252	Paterson City	CT 1831.01	CBG 2	47.0%	12.3%	24.0%	3.8%	12.0%	20.6%	12.0%
253	Paterson City	CT 1831.01	CBG 3	21.0%	7.9%	19.0%	24.5%	3.0%	20.1%	17.0%
254	Paterson City	CT 1831.02	CBG 1	69.0%	15.2%	7.0%	16.3%	12.0%	35.5%	6.0%
255	Paterson City	CT 1831.02	CBG 2	110.0%	31.9%	33.0%	13.3%	6.0%	37.8%	14.0%
256	Paterson City	CT 1831.02	CBG 3	60.0%	5.2%	6.0%	21.5%	16.0%	40.3%	17.0%
257	Paterson City	CT 1832	CBG 1	73.0%	35.0%	13.0%	62.4%	20.0%	51.2%	22.0%
258	Paterson City	CT 1832	CBG 2	90.0%	35.1%	34.0%	62.5%	10.0%	18.8%	14.0%
259	Paterson City	CT 2036	CBG 2	23.0%	6.7%	8.0%	25.0%	10.0%	32.5%	17.0%
260	Paterson City	CT 2036	CBG 3	37.0%	24.7%	6.0%	38.9%	12.0%	43.6%	8.0%
261	Paterson City	CT 2036	CBG 4	21.0%	12.9%	0.0%	8.9%	2.0%	28.4%	5.0%
262	Paterson City	CT 2642	CBG 1	147.0%	29.2%	28.0%	40.6%	17.0%	60.2%	9.0%
263	Paterson City	CT 2642	CBG 2	65.0%	46.6%	12.0%	43.7%	15.0%	48.6%	6.0%
264	Paterson City	CT 2642	CBG 3	0.0%	62.1%	0.0%	62.1%	35.0%	27.8%	0.0%
265	Pompton Lakes Borough	CT 1165	CBG 2	10.0%	24.1%	15.0%	24.1%	6.0%	45.7%	3.0%
266	Pompton Lakes Borough	CT 1964.01	CBG 1	11.0%	3.5%	1.0%	2.9%	10.0%	22.2%	24.0%
267	Pompton Lakes Borough	CT 1964.02	CBG 1	39.0%	8.9%	4.0%	16.6%	13.0%	16.0%	9.0%
268	Pompton Lakes Borough	CT 1964.02	CBG 2	5.0%	5.5%	21.0%	23.0%	16.0%	13.8%	18.0%
269	Pompton Lakes Borough	CT 1964.02	CBG 4	16.0%	8.0%	4.0%	6.5%	8.0%	30.2%	6.0%
270	Pompton Lakes Borough	CT 2366.01	CBG 1	8.0%	0.0%	0.0%	0.0%	15.0%	21.3%	24.0%
271	Pompton Lakes Borough	CT 2366.01	CBG 2	20.0%	0.0%	2.0%	3.1%	5.0%	29.6%	11.0%
272	Pompton Lakes Borough	CT 2366.02	CBG 3	5.0%	3.9%	0.0%	1.0%	16.0%	23.8%	33.0%
273	Prospect Park Borough	CT 1337.02	CBG 1	39.0%	7.3%	17.0%	9.4%	7.0%	22.2%	18.0%
274	Prospect Park Borough	CT 1434	CBG 3	9.0%	11.3%	0.0%	14.1%	8.0%	6.6%	27.0%
275	Prospect Park Borough	CT 1434	CBG 6	15.0%	0.0%	0.0%	0.0%	7.0%	66.0%	4.0%
276	Prospect Park Borough	CT 1635	CBG 3	3.0%	6.5%	0.0%	8.6%	12.0%	36.3%	6.0%
277	Prospect Park Borough	CT 2036	CBG 1	23.0%	17.7%	6.0%	3.2%	12.0%	37.5%	10.0%
278	Prospect Park Borough	CT 2036	CBG 5	44.0%	10.9%	5.0%	7.9%	14.0%	37.0%	10.0%
279	Ringwood Borough	CT 2167.01	CBG 2	18.0%	4.1%	0.0%	3.1%	12.0%	35.3%	15.0%
280	Ringwood Borough	CT 2167.01	CBG 3	13.0%	0.0%	0.0%	0.0%	12.0%	23.1%	24.0%
281	Ringwood Borough	CT 2568.02	CBG 2	0.0%	7.1%	0.0%	2.9%	11.0%	9.4%	24.0%
282	Ringwood Borough	CT 2568.02	CBG 4	3.0%	2.8%	0.0%	0.0%	6.0%	26.7%	11.0%
283	Totowa Borough	CT 1337.02	CBG 2	13.0%	10.2%	5.0%	0.0%	7.0%	27.3%	12.0%
284	Totowa Borough	CT 1801	CBG 1	18.0%	5.7%	28.0%	10.5%	14.0%	16.4%	16.0%
285	Totowa Borough	CT 1801	CBG 6	56.0%	0.0%	6.0%	0.0%	13.0%	28.0%	11.0%
286	Totowa Borough	CT 1802.01	CBG 1	133.0%	23.8%	10.0%	12.3%	13.0%	34.7%	11.0%
287	Totowa Borough	CT 2238.01	CBG 3	13.0%	6.2%	0.0%	3.4%	14.0%	24.6%	20.0%

1: Foreign-Born data is not included as it is only available at the Census Tract level.

2: Green shaded cells highlight census block groups with above average percentage for each indicator.

BIKE PASSAIC COUNTY



ENVIRONMENT JUSTICE DATA BY INDICATOR¹ BY CENSUS BLOCK GROUP²

Draft 12.1.2021

No.	Municipality Name	Census Tract (CT) No.	Census Block Group (CBG) No.	Percent Minority Population	Percent Low Income HH	Percent Limited English Speaking HH	Percent Zero Car HH	Percent Persons with a Disability	Percent Children 17 yrs & under	Percent Seniors (65+ yrs)
288	Totowa Borough	CT 2238.02	CBG 1	3.0%	5.4%	8.0%	0.0%	17.0%	20.2%	28.0%
289	Totowa Borough	CT 2238.02	CBG 3	58.0%	2.0%	7.0%	1.2%	7.0%	21.2%	23.0%
290	Totowa Borough	CT 2238.02	CBG 4	12.0%	0.0%	0.0%	4.0%	9.0%	3.8%	8.0%
291	Totowa Borough	CT 2238.02	CBG 5	3.0%	3.7%	0.0%	13.3%	14.0%	5.7%	26.0%
292	Totowa Borough	CT 2239	CBG 1	5.0%	0.0%	0.0%	0.0%	57.0%	1.9%	5.0%
293	Totowa Borough	CT 2461.04	CBG 1	18.0%	5.4%	6.0%	14.5%	9.0%	19.9%	26.0%
294	Totowa Borough	CT 2462.03	CBG 2	7.0%	2.9%	0.0%	4.3%	8.0%	21.9%	19.0%
295	Totowa Borough	CT 2463	CBG 2	13.0%	1.3%	3.0%	0.0%	8.0%	20.1%	8.0%
296	Wanaque Borough	CT 2167.01	CBG 1	0.0%	0.0%	0.0%	0.0%	10.0%	26.1%	12.0%
297	Wanaque Borough	CT 2167.02	CBG 2	23.0%	2.8%	1.0%	0.0%	11.0%	30.7%	13.0%
298	Wanaque Borough	CT 2167.02	CBG 3	11.0%	0.0%	0.0%	0.0%	4.0%	31.2%	20.0%
299	Wanaque Borough	CT 2366.01	CBG 3	11.0%	7.8%	4.0%	11.8%	10.0%	27.9%	17.0%
300	Wanaque Borough	CT 2366.01	CBG 4	13.0%	8.7%	15.0%	14.5%	13.0%	22.6%	14.0%
301	Wanaque Borough	CT 2366.02	CBG 2	12.0%	14.6%	0.0%	11.5%	14.0%	19.0%	8.0%
302	Wanaque Borough	CT 2366.02	CBG 4	8.0%	2.5%	2.0%	0.0%	9.0%	27.1%	14.0%
303	Wayne Township	CT 1964.01	CBG 2	7.0%	5.0%	0.0%	4.1%	16.0%	35.6%	8.0%
304	Wayne Township	CT 1964.01	CBG 3	11.0%	13.0%	4.0%	0.0%	15.0%	35.3%	8.0%
305	Wayne Township	CT 1964.02	CBG 3	11.0%	6.7%	4.0%	1.7%	12.0%	22.7%	10.0%
306	Wayne Township	CT 1964.02	CBG 5	2.0%	4.0%	0.0%	2.3%	17.0%	10.4%	41.0%
307	Wayne Township	CT 2460.01	CBG 1	22.0%	15.7%	10.0%	14.8%	14.0%	31.7%	28.0%
308	Wayne Township	CT 2460.02	CBG 1	6.0%	0.0%	0.0%	0.0%	12.0%	28.1%	18.0%
309	Wayne Township	CT 2460.02	CBG 2	5.0%	3.4%	4.0%	0.0%	11.0%	5.3%	41.0%
310	Wayne Township	CT 2460.02	CBG 3	4.0%	0.0%	0.0%	0.0%	8.0%	26.5%	40.0%
311	Wayne Township	CT 2460.03	CBG 1	10.0%	0.0%	0.0%	0.0%	6.0%	38.1%	8.0%
312	Wayne Township	CT 2460.03	CBG 2	15.0%	0.0%	3.0%	0.0%	9.0%	35.0%	22.0%
313	Wayne Township	CT 2460.03	CBG 3	8.0%	0.0%	0.0%	5.7%	13.0%	36.8%	31.0%
314	Wayne Township	CT 2460.03	CBG 4	12.0%	0.0%	3.0%	0.0%	8.0%	43.8%	18.0%
315	Wayne Township	CT 2460.03	CBG 5	5.0%	0.0%	0.0%	0.0%	0.0%	53.4%	5.0%
316	Wayne Township	CT 2460.03	CBG 6	6.0%	6.4%	0.0%	0.0%	11.0%	18.8%	21.0%
317	Wayne Township	CT 2461.01	CBG 1	2.0%	2.4%	2.0%	6.9%	28.0%	13.2%	39.0%
318	Wayne Township	CT 2461.01	CBG 2	20.0%	8.3%	0.0%	8.3%	25.0%	21.5%	24.0%
319	Wayne Township	CT 2461.01	CBG 3	29.0%	3.3%	0.0%	0.0%	11.0%	51.2%	14.0%
320	Wayne Township	CT 2461.02	CBG 1	23.0%	4.2%	4.0%	4.6%	12.0%	12.3%	19.0%
321	Wayne Township	CT 2461.02	CBG 2	39.0%	9.5%	13.0%	7.0%	10.0%	28.8%	6.0%
322	Wayne Township	CT 2461.03	CBG 1	9.0%	7.2%	12.0%	10.9%	9.0%	30.7%	19.0%
323	Wayne Township	CT 2461.03	CBG 2	13.0%	2.7%	0.0%	0.0%	10.0%	21.7%	17.0%
324	Wayne Township	CT 2461.03	CBG 3	3.0%	0.0%	0.0%	0.0%	4.0%	20.4%	36.0%
325	Wayne Township	CT 2461.03	CBG 4	17.0%	0.0%	16.0%	0.0%	12.0%	30.6%	25.0%
326	Wayne Township	CT 2461.03	CBG 5	4.0%	0.0%	5.0%	0.0%	5.0%	20.3%	6.0%
327	Wayne Township	CT 2462.01	CBG 1	4.0%	0.0%	2.0%	0.0%	7.0%	25.0%	17.0%
328	Wayne Township	CT 2462.01	CBG 2	23.0%	2.2%	4.0%	0.0%	6.0%	37.5%	21.0%

1: Foreign-Born data is not included as it is only available at the Census Tract level.

2: Green shaded cells highlight census block groups with above average percentage for each indicator.

BIKE PASSAIC COUNTY



ENVIRONMENT JUSTICE DATA BY INDICATOR¹ BY CENSUS BLOCK GROUP²

Draft 12.1.2021

No.	Municipality Name	Census Tract (CT) No.	Census Block Group (CBG) No.	Percent Minority Population	Percent Low Income HH	Percent Limited English Speaking HH	Percent Zero Car HH	Percent Persons with a Disability	Percent Children 17 yrs & under	Percent Seniors (65+ yrs)
329	Wayne Township	CT 2462.01	CBG 3	14.0%	2.3%	0.0%	1.1%	9.0%	27.6%	19.0%
330	Wayne Township	CT 2462.02	CBG 1	7.0%	3.3%	0.0%	0.0%	7.0%	45.2%	13.0%
331	Wayne Township	CT 2462.02	CBG 2	2.0%	6.6%	0.0%	2.2%	8.0%	33.3%	17.0%
332	Wayne Township	CT 2462.02	CBG 3	4.0%	1.3%	0.0%	1.6%	8.0%	29.6%	19.0%
333	Wayne Township	CT 2462.02	CBG 4	1.0%	0.0%	0.0%	0.0%	3.0%	38.4%	15.0%
334	Wayne Township	CT 2462.03	CBG 1	6.0%	3.7%	2.0%	1.5%	8.0%	24.8%	23.0%
335	Wayne Township	CT 2462.03	CBG 3	8.0%	0.0%	6.0%	3.1%	6.0%	26.3%	19.0%
336	Wayne Township	CT 2463	CBG 1	12.0%	4.1%	3.0%	0.0%	6.0%	17.5%	19.0%
337	Wayne Township	CT 2463	CBG 4	5.0%	0.0%	0.0%	0.0%	8.0%	25.8%	9.0%
338	West Milford Township	CT 2568.01	CBG 1	35.0%	5.5%	5.0%	0.0%	18.0%	26.0%	7.0%
339	West Milford Township	CT 2568.01	CBG 2	3.0%	0.0%	0.0%	0.0%	8.0%	30.4%	4.0%
340	West Milford Township	CT 2568.01	CBG 3	2.0%	9.3%	3.0%	5.4%	13.0%	13.3%	18.0%
341	West Milford Township	CT 2568.01	CBG 4	15.0%	7.5%	2.0%	0.0%	15.0%	39.6%	12.0%
342	West Milford Township	CT 2568.02	CBG 1	4.0%	2.7%	0.0%	0.0%	9.0%	5.6%	14.0%
343	West Milford Township	CT 2568.02	CBG 3	1.0%	0.0%	0.0%	15.0%	15.0%	12.0%	13.0%
344	West Milford Township	CT 2568.03	CBG 1	20.0%	0.0%	4.0%	2.6%	6.0%	36.0%	7.0%
345	West Milford Township	CT 2568.03	CBG 2	8.0%	12.6%	0.0%	6.3%	11.0%	20.7%	38.0%
346	West Milford Township	CT 2568.04	CBG 1	7.0%	1.9%	0.0%	0.0%	6.0%	27.3%	14.0%
347	West Milford Township	CT 2568.04	CBG 2	5.0%	5.8%	0.0%	0.0%	9.0%	29.5%	13.0%
348	West Milford Township	CT 2568.04	CBG 4	2.0%	3.8%	0.0%	15.6%	5.0%	7.5%	17.0%
349	West Milford Township	CT 2568.05	CBG 1	7.0%	1.5%	2.0%	3.1%	17.0%	28.2%	19.0%
350	West Milford Township	CT 2568.05	CBG 2	9.0%	2.5%	0.0%	0.0%	8.0%	30.3%	9.0%
351	Woodland Park Borough	CT 1242	CBG 1	14.0%	22.9%	4.0%	0.0%	8.0%	44.9%	14.0%
352	Woodland Park Borough	CT 1242	CBG 6	73.0%	2.7%	6.0%	0.0%	14.0%	17.0%	20.0%
353	Woodland Park Borough	CT 1801	CBG 3	46.0%	6.5%	37.0%	0.0%	7.0%	38.4%	12.0%
354	Woodland Park Borough	CT 1819	CBG 2	21.0%	11.6%	5.0%	3.8%	8.0%	22.3%	10.0%
355	Woodland Park Borough	CT 1819	CBG 3	63.0%	31.7%	18.0%	14.6%	8.0%	30.7%	6.0%
356	Woodland Park Borough	CT 1819	CBG 4	43.0%	11.7%	23.0%	14.6%	18.0%	41.8%	7.0%
357	Woodland Park Borough	CT 1821	CBG 4	0.0%	#DIV/0!	#DIV/0!	#DIV/0!	#DIV/0!	0.0%	#DIV/0!
358	Woodland Park Borough	CT 2238.01	CBG 1	5.0%	4.4%	0.0%	0.0%	18.0%	27.0%	20.0%
359	Woodland Park Borough	CT 2238.01	CBG 2	4.0%	6.3%	4.0%	2.8%	16.0%	25.1%	9.0%
360	Woodland Park Borough	CT 2641.01	CBG 1	61.0%	16.2%	10.0%	5.7%	14.0%	45.6%	9.0%
361	Woodland Park Borough	CT 2641.01	CBG 2	33.0%	16.3%	2.0%	6.0%	4.0%	41.4%	5.0%
362	Woodland Park Borough	CT 2641.01	CBG 3	17.0%	6.2%	6.0%	1.1%	8.0%	12.2%	23.0%
363	Woodland Park Borough	CT 2641.01	CBG 4	16.0%	8.1%	12.0%	3.4%	11.0%	38.8%	15.0%
364	Woodland Park Borough	CT 2641.02	CBG 3	13.0%	10.4%	2.0%	4.2%	11.0%	31.5%	24.0%
365	Woodland Park Borough	CT 2641.02	CBG 4	5.0%	6.5%	17.0%	6.5%	3.0%	32.3%	18.0%

1: Foreign-Born data is not included as it is only available at the Census Tract level.

2: Green shaded cells highlight census block groups with above average percentage for each indicator.