

PROJECT INFORMATION:
 FILE PATH: G:\Projects\PASC\00259\Plans\1
 FILE NAME: PASC00259-REN.dwg
 DATE: 22 Oct 2025, 7:03PM
 LAST SAVE BY: BMarozzo

COPYRIGHT 2025, T&M ASSOCIATES - ALL RIGHTS RESERVED. THE COPYING OR REUSE OF THIS DOCUMENT OR PORTIONS THEREOF, FOR OTHER THAN THE ORIGINAL PROJECT PURPOSES, IS EXPRESSLY INTENDED, WITHOUT THE WRITTEN PERMISSION OF T&M ASSOCIATES IS PROHIBITED.

LEGEND:

- — — — — PROPERTY LINE
- - - - - TOP OF BANK
- FW FWA FWT FWW FLOODWAY
- FHA FWA FWT FWW FLOOD HAZARD AREA
- FWA FWT FWW FRESHWATER WETLAND (FW)
- FWA FWT FWW FRESHWATER WETLAND (FW) TRANSITION AREA
- RZ RZ RZ RIPARIAN BUFFER

20' 10' 0 20' 40'
 1" = 20'

NO.	DATE	REVISIONS	BY	CHKD

--	--

PASSAIC COUNTY DEPT. OF CULTURAL & HISTORIC AFFAIRS
GOFFLE BROOK PARK NORTH CORRIDOR SITE IMPROVEMENTS
 BOROUGH OF HAWTHORNE, PASSAIC COUNTY, NEW JERSEY



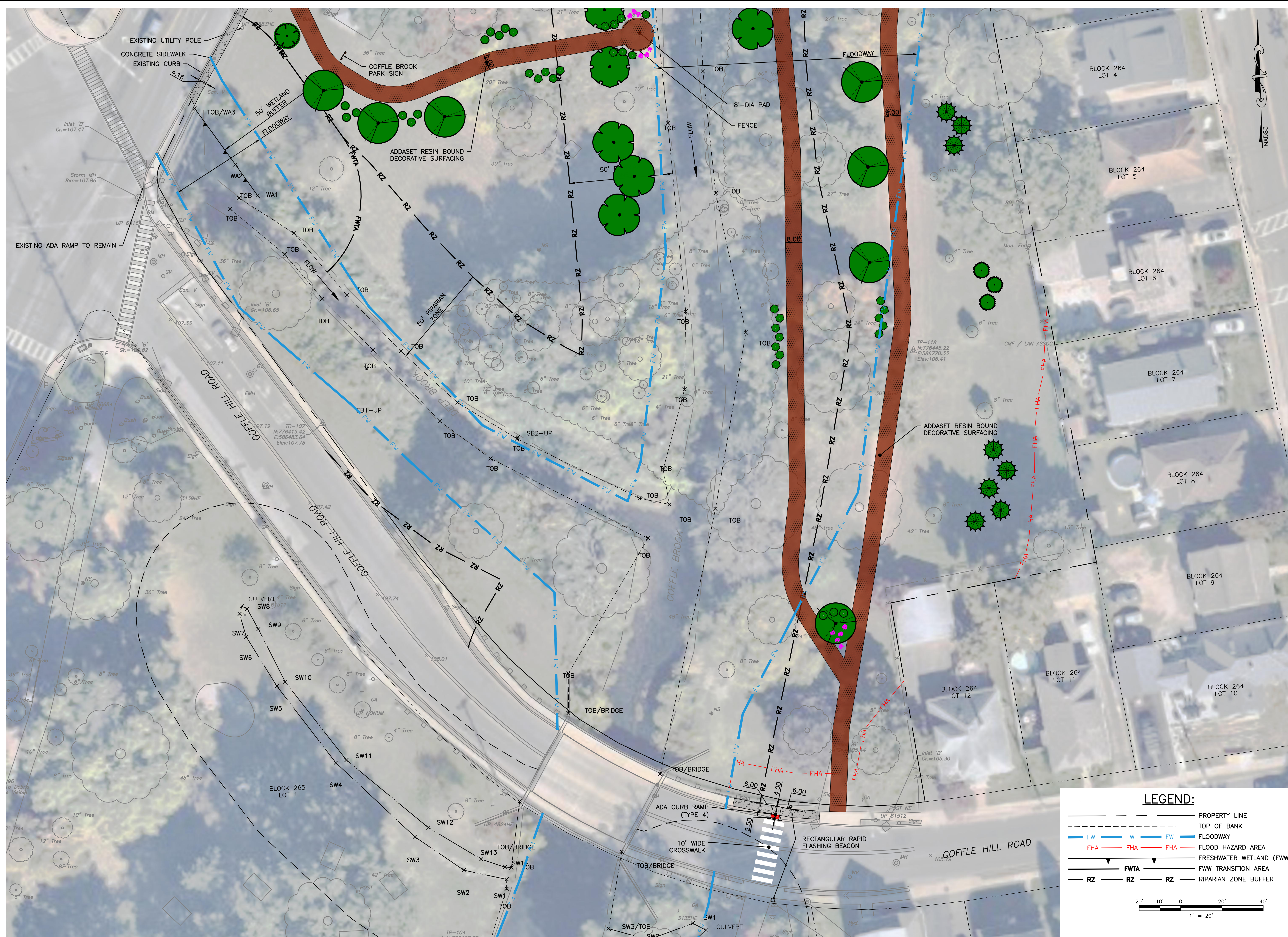
400 BROAD ACRES DRIVE, SUITE 250
 BLOOMFIELD, NJ 07003
 TEL 973-614-0005
 FAX 973-338-5867
 www.tandmassociates.com
 NEW JERSEY BOARD OF PROFESSIONAL ENGINEERS
 AND LAND SURVEYORS
 CERTIFICATE OF AUTHORIZATION A6427987500

OFFICES LOCATED IN:
 CALIFORNIA, INDIANA, KENTUCKY,
 MASSACHUSETTS, MICHIGAN, NEW JERSEY,
 OHIO AND PENNSYLVANIA

DESIGNED BY	JM	DRAWING	REN-1
CHECKED BY	JM	SHEET	1
DRAWN BY	BAM	OF	2
DATE	10-23-2025		
SCALE	AS SHOWN		
PROJ. NO.	PASC00259		

PROJECT INFORMATION:
 FILE PATH: G:\Projects\PASC\00259\Plans\1
 FILE NAME: PASC00259-REN.dwg
 DATE: 22 Oct 2025, 7:03PM
 LAST SAVE BY: B.Merzozo

COPYRIGHT 2025, T&M ASSOCIATES - ALL RIGHTS RESERVED. THE COPYING OR REUSE
 OF THIS DOCUMENT OR PORTIONS THEREOF, FOR OTHER THAN THE ORIGINAL PROJECT
 PURPOSES, IS STRICTLY PROHIBITED. WITHOUT THE WRITTEN PERMISSION OF T&M
 ASSOCIATES IS PROHIBITED.



NO.	DATE	REVISIONS	BY	CHKD

NO.	DATE	REVISIONS	BY	CHKD

PASSAIC COUNTY DEPT. OF CULTURAL & HISTORIC AFFAIRS
GOFFLE BROOK PARK NORTH CORRIDOR SITE IMPROVEMENTS
 BOROUGH OF HAWTHORNE, PASSAIC COUNTY, NEW JERSEY



400 BROAD ACRES DRIVE, SUITE 250
 BLOOMFIELD, NJ 07003
 TEL 973-614-0005
 FAX 973-338-5867
 www.andassociates.com
 NEW JERSEY BOARD OF PROFESSIONAL ENGINEERS
 AND LAND SURVEYORS
 CERTIFICATE OF AUTHORIZATION 24A27987500

DESIGNED BY	JM	DRAWING	REN-2
CHECKED BY	JM	SHEET	2
DRAWN BY	BAM	OF	2
DATE	10-23-2025		
SCALE	AS SHOWN		
PROJ. NO.	PASC00259		

LEGEND:

- — — — — PROPERTY LINE
- - - - - TOP OF BANK
- FW FLOODWAY
- FHA FLOOD HAZARD AREA
- FWTA FRESHWATER WETLAND (FW)
- FFWA FFW TRANSITION AREA
- RZ RIPARIAN ZONE BUFFER

20' 10' 0 20' 40'
 1" = 20'